

Recombinant Human CD300A protein, Fc-tagged

Cat. No. CD300A-267H Lot. No. (See product label)

SPECIFICATION

Product Overview	Recombinant Human CD300A (Leu18-Gln178) protein was fused to human IgG1 Fc tag at C-terminus and expressed in human 293 cells (HEK293).
Species	Human
Source	HEK293
ProteinLength	Leu18-Gln178
Description	CD300 antigen-like family member A (CD300A) is also known as CMRF35-like molecule 8 (CLM-8), CMRF-35-H9, CMRF35-H, Immunoglobulin superfamily member 12 (IGSF12), NK inhibitory receptor, LMIR1, which belongs to the CD300 family. CD300A contains one Ig-like V-type (immunoglobulin-like) domain. CD300A is expressed not only by natural killer (NK) cells but also by T-cell subsets, B-cells, dendritic cells, mast cells, granulocytes and monocytes. CD300A is a inhibitory receptor which may contribute to the down-regulation of cytolytic activity in natural killer (NK) cells, and to the down-regulation of mast cell degranulation.
Predicted N Terminal	Leu18
Form	Lyophilized from 0.22 µm filtered solution in 50 mM Tris, 100 mM Glycine, pH7.5, 10% trehalose.
Molecular Mass	The protein has a calculated MW of 44 kDa. As a result of glycosylation, the protein migrates as 52-66 kDa under reducing (R) condition, and 105-130 kDa under non-

 Tel: 1-631-559-9269 1-516-512-3133

 Email: info@creative-biomart.com  Fax: 1-631-938-8127

 45-1 Ramsey Road, Shirley, NY 11967, USA

	reducing (NR) condition (SDS-PAGE).
Endotoxin	Less than 1.0 EU per µg by the LAL method.
Purity	>95% as determined by SDS-PAGE.
Storage	<p>For long term storage, the product should be stored at lyophilized state at -20 centigrade or lower.</p> <p>Please avoid repeated freeze-thaw cycles.</p> <p>This product is stable after storage at:</p> <p>-20 to -70 centigrade for 12 months in lyophilized state;</p> <p>-70 centigrade for 3 months under sterile conditions after reconstitution.</p>
Reconstitution	It is recommended that sterile water be added to the vial to prepare a stock solution of 0.2 ug/ul. Centrifuge the vial at 4°C before opening to recover the entire contents.

GENE INFORMATION

Gene Name	CD300A
Official Symbol	CD300A
Synonyms	CD300A; CD300a molecule; CD300a antigen; CMRF35-like molecule 8; CMRF 35 H9; CMRF35H; IGSF12; IRC1; IRC2; Irp60; NK inhibitory receptor; leukocyte membrane antigen; inhibitory receptor protein 60; CD300 antigen-like family member A; immunoglobulin superfamily member 12; CMRF35H leukocyte immunoglobulin-like receptor; CLM-8; IRp60; CMRF-35H; CMRF35-H; CMRF35H9; CMRF35-H9; IRC1/IRC2; CMRF-35-H9
Gene ID	11314

 Tel: 1-631-559-9269 1-516-512-3133

 Email: info@creative-biomart.com  Fax: 1-631-938-8127

 45-1 Ramsey Road, Shirley, NY 11967, USA

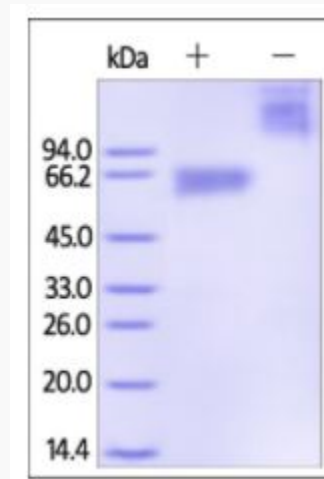
mRNA Refseq [NM_001256841](#)

Protein Refseq [NP_001243770](#)

MIM [606790](#)

UniProt ID [Q9UGN4](#)

**SDS-PAGE of
CD300A-267H**



Human CD300a, Fc Tag on SDS-PAGE under reducing (R) and non-reducing (NR) conditions. The gel was stained overnight with Coomassie Blue. The purity of the protein is greater than 95%.

 Tel: 1-631-559-9269 1-516-512-3133

 Email: info@creative-biomart.com  Fax: 1-631-938-8127

 45-1 Ramsey Road, Shirley, NY 11967, USA