

Recombinant Human CD300A protein, hFc-tagged

Cat. No. CD300A-7854H Lot. No. (See product label)

SPECIFICATION

Product Overview	Recombinant Human CD300A protein(Q9UGN4-1)(Leu18-Pro180), fused with C-terminal hFc tag, was expressed in HEK293.
Species	Human
Source	HEK293
ProteinLength	Leu18-Pro180
Tag	C-hFc
Form	Supplied as 0.22µm filtered solution in PBS (pH 7.4).
Bio-activity	Immobilized Human CD300A, hFc Tag at 1ug/ml (100ul/Well) on the plate. Dose response curve for Biotinylated Anti-CD300A Antibody, hFc Tag with the EC50 of 37.9ng/ml determined by ELISA.
Molecular Mass	The protein has a predicted MW of 44.4 kDa. Due to glycosylation, the protein migrates to 60-75 kDa based on Tris-Bis PAGE result.
Endotoxin	Less than 1EU per µg by the LAL method.
Purity	> 95% as determined by Tris-Bis PAGE;> 95% as determined by HPLC
Storage	Valid for 12 months from date of receipt when stored at -80°C. Recommend to aliquot

 Tel: 1-631-559-9269 1-516-512-3133

 Email: info@creative-biomart.com  Fax: 1-631-938-8127

 45-1 Ramsey Road, Shirley, NY 11967, USA

the protein into smaller quantities for optimal storage. Please do not repeated freeze-thaw cycles.

Reconstitution

It is recommended that sterile water be added to the vial to prepare a stock solution of 0.2 ug/ul. Centrifuge the vial at 4°C before opening to recover the entire contents.

GENE INFORMATION

Gene Name [CD300A CD300a molecule \[Homo sapiens \]](#)

Official Symbol [CD300A](#)

Synonyms

CD300A; CD300a molecule; CD300a antigen; CMRF35-like molecule 8; CMRF 35 H9; CMRF35H; IGSF12; IRC1; IRC2; Irp60; NK inhibitory receptor; leukocyte membrane antigen; inhibitory receptor protein 60; CD300 antigen-like family member A; immunoglobulin superfamily member 12; CMRF35H leukocyte immunoglobulin-like receptor; CLM-8; IRp60; CMRF-35H; CMRF35-H; CMRF35H9; CMRF35-H9; IRC1/IRC2; CMRF-35-H9;

Gene ID [11314](#)

mRNA Refseq [NM_001256841](#)

Protein Refseq [NP_001243770](#)

MIM [606790](#)

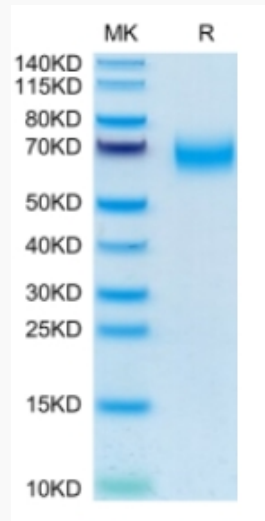
UniProt ID [Q9UGN4](#)

 Tel: 1-631-559-9269 1-516-512-3133

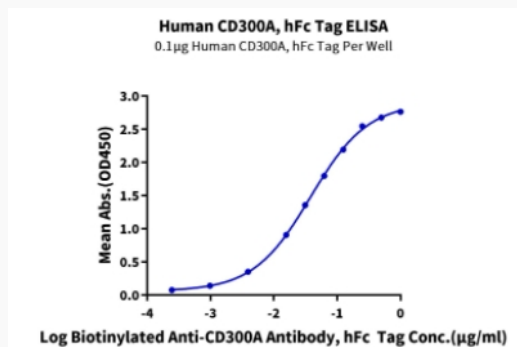
 Email: info@creative-biomart.com  Fax: 1-631-938-8127

 45-1 Ramsey Road, Shirley, NY 11967, USA

Tris-Bis PAGE



ELISA Data



 Tel: 1-631-559-9269 1-516-512-3133

 Email: info@creative-biomart.com  Fax: 1-631-938-8127

 45-1 Ramsey Road, Shirley, NY 11967, USA