

Recombinant Human CD300C Protein, GST-Tagged

Cat. No. CD300C-0779H Lot. No. (See product label)

SPECIFICATION

Product Overview	Human CD300C full-length ORF (AAH22279, 21 a.a. - 224 a.a.) recombinant protein with GST-tag at N-terminal.
Species	Human
Source	Wheat Germ
Description	The CMRF35 antigen, which was identified by reactivity with a monoclonal antibody, is present on monocytes, neutrophils, and some T and B lymphocytes (Jackson et al., 1992 [PubMed 1349532]).[supplied by OMIM, Mar 2008]
Molecular Mass	48.18 kDa
AA Sequence	GYFPLSHPMTVAGPVGGSLSVQCRYEKEHRTLNFKFWCRPPQILRCDKIVETKGSAG KRNGRVSIRDSPANLSFTVTLENLTEEDAGTYWCGVDTPWLRDFHDPIVEVEVSFVP AGTTTASSPQSSMGTS GPPTKLPVHTWPSVTRKDSPEPSHPGSLFSNVRLLLLVL LELPLLLSMLGAVLWVNRPQRSSRSRQNWPKGENQ
Applications	Enzyme-linked Immunoabsorbent Assay Western Blot (Recombinant protein) Antibody Production Protein Array
Storage	Store at -80 centigrade. Aliquot to avoid repeated freezing and thawing.

 Tel: 1-631-559-9269 1-516-512-3133

 Email: info@creative-biomart.com  Fax: 1-631-938-8127

 45-1 Ramsey Road, Shirley, NY 11967, USA

Storage Buffer 50 mM Tris-HCl, 10 mM reduced Glutathione, pH=8.0 in the elution buffer.

GENE INFORMATION

Gene Name CD300C CD300c molecule [Homo sapiens]

Official Symbol CD300C

Synonyms CD300C; CD300c molecule; CD300c antigen; CMRF35-like molecule 6; CMRF 35A; CMRF35; CMRF35A; IGSF16; LIR; CMRF35 antigen; CD300 antigen-like family member C; immunoglobulin superfamily member 16; CMRF35 leukocyte immunoglobulin-like receptor; CMRF35A leukocyte immunoglobulin-like receptor; CLM-6; CMRF-35; CMRF-35A; CMRF35A1; CMRF35-A1;


Gene ID 10871

mRNA Refseq NM_006678

Protein Refseq NP_006669

MIM 606786

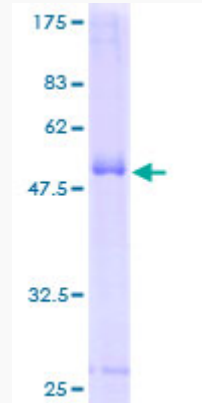
UniProt ID Q08708

 Tel: 1-631-559-9269 1-516-512-3133

 Email: info@creative-biomart.com  Fax: 1-631-938-8127

 45-1 Ramsey Road, Shirley, NY 11967, USA

**Quality Control
Testing**



12.5% SDS-PAGE Stained with Coomassie Blue.

 Tel: 1-631-559-9269 1-516-512-3133

 Email: info@creative-biomart.com  Fax: 1-631-938-8127

 45-1 Ramsey Road, Shirley, NY 11967, USA