

Recombinant Human CD300C protein, His-tagged

Cat. No. CD300C-576H Lot. No. (See product label)

SPECIFICATION

Product Overview	Recombinant Human CD300C (Gly21-Arg183) protein was fused to His-tag at C-terminus and expressed in human 293 cells (HEK293).
Species	Human
Source	HEK293
ProteinLength	Gly21-Arg183
Description	CMRF35-like molecule 6 (CLM-6) is also known as CD300 antigen-like family member C, CMRF35-A1, Immunoglobulin superfamily member 16 (IgSF16), CD antigen CD300c, which belongs to the CD300 family. CLM-6 contains one Ig-like V-type (immunoglobulin-like) domain. CD300a/c RNA and surface expression were downregulated after stimulation of plasmacytoid dendritic cells (pDCs) with TLR7 and TLR9 ligands. Exogenous interferon (IFN)-alpha down-regulated CD300a/c expression. CD300a and CD300c play an important role in the cross-regulation of TNF-alpha and IFN-alpha secretion from pDCs. CD300a and CD300c are indistinguishable on the surface of NK cells.
Predicted N Terminal	Gly21
Form	Lyophilized from 0.22 µm filtered solution in PBS, pH7.4, 10% trehalose.
Molecular Mass	The protein has a calculated MW of 18.7 kDa. The protein migrates as 25-45 kDa under reducing (R) condition (SDS-PAGE) due to glycosylation.

 Tel: 1-631-559-9269 1-516-512-3133

 Email: info@creative-biomart.com  Fax: 1-631-938-8127

 45-1 Ramsey Road, Shirley, NY 11967, USA

Endotoxin	Less than 1.0 EU per µg by the LAL method.
Purity	>95% as determined by SDS-PAGE.
Storage	<p>For long term storage, the product should be stored at lyophilized state at -20 centigrade or lower.</p> <p>Please avoid repeated freeze-thaw cycles.</p> <p>This product is stable after storage at:</p> <p>-20 to -70 centigrade for 12 months in lyophilized state; -70 centigrade for 3 months under sterile conditions after reconstitution.</p>
Reconstitution	It is recommended that sterile water be added to the vial to prepare a stock solution of 0.2 ug/ul. Centrifuge the vial at 4°C before opening to recover the entire contents.

GENE INFORMATION

Gene Name	CD300C
Official Symbol	CD300C
Synonyms	CD300C; CD300c molecule; CD300c antigen; CMRF35-like molecule 6; CMRF 35A; CMRF35; CMRF35A; IGSF16; LIR; CMRF35 antigen; CD300 antigen-like family member C; immunoglobulin superfamily member 16; CMRF35 leukocyte immunoglobulin-like receptor; CMRF35A leukocyte immunoglobulin-like receptor; CLM-6; CMRF-35; CMRF-35A; CMRF35A1; CMRF35-A1
Gene ID	10871
mRNA Refseq	NM_006678
Protein Refseq	NP_006669

 Tel: 1-631-559-9269 1-516-512-3133

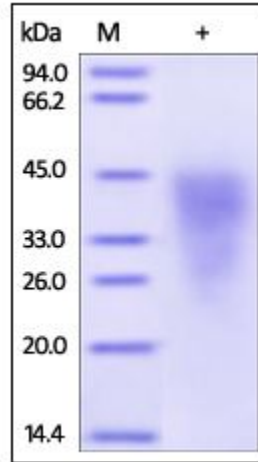
 Email: info@creative-biomart.com  Fax: 1-631-938-8127

 45-1 Ramsey Road, Shirley, NY 11967, USA

MIM 606786

UniProt ID Q08708

**SDS-PAGE of
CD300C-576H**



Human CD300c, His Tag on SDS-PAGE under reducing (R) condition. The gel was stained overnight with Coomassie Blue. The purity of the protein is greater than 95%.

 Tel: 1-631-559-9269 1-516-512-3133

 Email: info@creative-biomart.com  Fax: 1-631-938-8127

 45-1 Ramsey Road, Shirley, NY 11967, USA