

Recombinant Human CD300E Protein, GST-Tagged

Cat. No. CD300E-0782H Lot. No. (See product label)

SPECIFICATION

Product Overview	Human CD300E full-length ORF (AAI00889.1, 1 a.a. - 205 a.a.) recombinant protein with GST-tag at N-terminal.
Species	Human
Source	Wheat Germ
Description	This gene encodes a member of the CD300 glycoprotein family of cell surface proteins expressed on myeloid cells. The protein interacts with the TYRO protein tyrosine kinase-binding protein and is thought to act as an activating receptor. [provided by RefSeq, Nov 2012]
Molecular Mass	49.4 kDa
AA Sequence	MWLLPALLLLCLSGCLSLKGPVSVTGTAGDSLTVWCQYESMYKGYNKYWCRGQYD TSCESIVETKGEEKVERNGRVSIRDHPEALFTVTMQNLNEDDAGSYWCKIQTVWV LDSWSRDPDSLVRVYVSPAITTPRRTHPATPPIFLVNPGRNLSTREVLTTQNSGFR LSSPHFLLVLLKLPLLLSMLGAVFVWVNRPWAPPGR
Applications	Enzyme-linked Immunoabsorbent Assay Western Blot (Recombinant protein) Antibody Production Protein Array
Storage	Store at -80 centigrade. Aliquot to avoid repeated freezing and thawing.

 Tel: 1-631-559-9269 1-516-512-3133

 Email: info@creative-biomart.com  Fax: 1-631-938-8127

 45-1 Ramsey Road, Shirley, NY 11967, USA

Storage Buffer 50 mM Tris-HCl, 10 mM reduced Glutathione, pH=8.0 in the elution buffer.

GENE INFORMATION

Gene Name CD300E CD300e molecule [Homo sapiens]

Official Symbol CD300E

Synonyms CD300E; CD300e molecule; CD300 antigen like family member E, CD300e antigen, CD300LE; CMRF35-like molecule 2; CLM2; IREM2; CD300e antigen; poly-Ig receptor 2; CD300 antigen like family member E; CD300 antigen-like family member E; polymeric immunoglobulin receptor 2; immune receptor expressed on myeloid cells 2; CLM-2; PIgR2; IREM-2; PIgR-2; CD300LE; CMRF35-A5;

Gene ID 342510

mRNA Refseq NM_181449

Protein Refseq NP_852114

MIM 609801

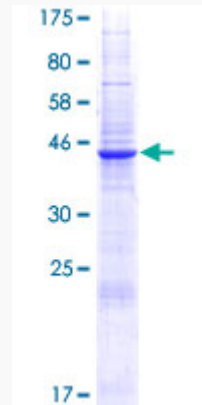
UniProt ID Q496F6

 Tel: 1-631-559-9269 1-516-512-3133

 Email: info@creative-biomart.com  Fax: 1-631-938-8127

 45-1 Ramsey Road, Shirley, NY 11967, USA

**Quality Control
Testing**



12.5% SDS-PAGE Stained with Coomassie Blue.

 Tel: 1-631-559-9269 1-516-512-3133

 Email: info@creative-biomart.com  Fax: 1-631-938-8127

 45-1 Ramsey Road, Shirley, NY 11967, USA