

# Active Recombinant Human CD300E Protein, Fc-tagged, Alexa Fluor<sup>®</sup> 488 conjugated

Cat. No. CD300E-11H Lot. No. (See product label)

## SPECIFICATION

**Product Overview** Recombinant human Alexa Fluor<sup>®</sup> 488 conjugated CD300e/LMIR6 (Leu18-Leu169) protein with human IgG1 (Pro100-Lys330) Fc tag at C-terminus was expressed in human embryonic kidney cell.

**Species** Human

**Source** HEK293

**ProteinLength** 18-169 a.a.

**Description** This gene encodes a member of the CD300 glycoprotein family of cell surface proteins expressed on myeloid cells. The protein interacts with the TYRO protein tyrosine kinase-binding protein and is thought to act as an activating receptor.

**Form** Disulfide-linked homodimer  
Labeled with Alexa Fluor<sup>®</sup> 488  
Excitation Wavelength: 488 nm  
Emission Wavelength: 515-545 nm

**Bio-activity** Measured by flow cytometry for its ability to bind anti-Human CD300e/LMIR6 Monoclonal Antibody conjugated beads. The concentration of Recombinant Human CD300e/LMIR6 Chimera Alexa Fluor<sup>®</sup> 488 that produces 50% of the binding response is 3.00-60.0 ng/mL.

 Tel: 1-631-559-9269 1-516-512-3133

 Email: [info@creative-biomart.com](mailto:info@creative-biomart.com)  Fax: 1-631-938-8127

 45-1 Ramsey Road, Shirley, NY 11967, USA

<b>Molecular Mass</b>	44 kDa
<b>N-terminal Sequence Analysis</b>	Leu18
<b>Endotoxin</b>	<1.0 EU/μg of the protein by the LAL method.
<b>Purity</b>	>95%, by SDS-PAGE visualized with Silver Staining and quantitative densitometry by Coomassie® Blue Staining.
<b>Storage</b>	Protect from light. Use a manual defrost freezer and avoid repeated freeze-thaw cycles. 6 months from date of receipt, -20 to -70 centigrade as supplied. 1 month, 2 to 8 centigrade under sterile conditions after opening. 3 months, -20 to -70 centigrade under sterile conditions after opening.
<b>Storage Buffer</b>	Supplied as a 0.2 μm filtered solution in PBS with BSA as a carrier protein.
<b>Shipping</b>	The product is shipped with dry ice or equivalent.
<b>Conjugation</b>	Alexa Fluor 488

## GENE INFORMATION

<b>Gene Name</b>	CD300E CD300e molecule [ Homo sapiens (human) ]
<b>Official Symbol</b>	CD300E
<b>Synonyms</b>	CD300E; CD300e molecule; CLM2; CLM-2; IREM2; PlgR2; IREM-2; PlgR-2; CD300LE; CMRF35-A5; CMRF35-like molecule 2; CD300 antigen-like family member E; CD300e antigen; immune receptor expressed on myeloid cells 2; poly-Ig receptor

 Tel: 1-631-559-9269 1-516-512-3133

 Email: [info@creative-biomart.com](mailto:info@creative-biomart.com)  Fax: 1-631-938-8127

 45-1 Ramsey Road, Shirley, NY 11967, USA

2; polymeric immunoglobulin receptor 2

**Gene ID** 342510

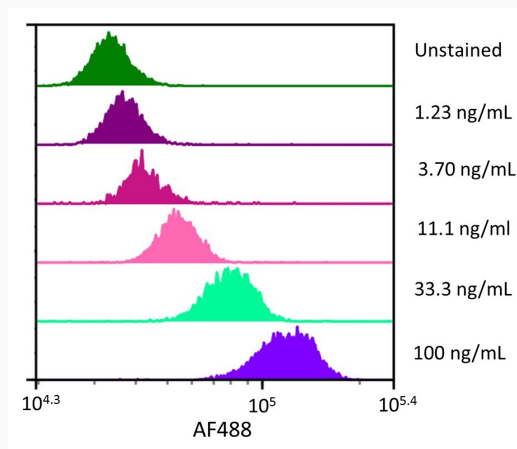
**mRNA Refseq** NM\_181449

**Protein Refseq** NP\_852114

**MIM** 609801

**UniProt ID** Q496F6

**FC**

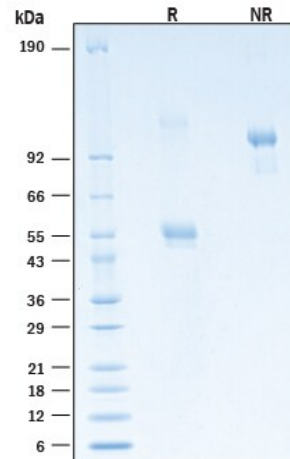


Streptavidin coated beads conjugated to biotinylated anti-human CD300e/LMIR6 Monoclonal Antibody were stained with the indicated concentrations of Recombinant Human CD300e/LMIR6 Fc Chimera Alexa Fluor® 488.

 Tel: 1-631-559-9269 1-516-512-3133

 Email: [info@creative-biomart.com](mailto:info@creative-biomart.com)  Fax: 1-631-938-8127

 45-1 Ramsey Road, Shirley, NY 11967, USA

**SDS-PAGE**

2 µg/lane of Recombinant Human CD300e Fc Chimera Alexa Fluor<sup>®</sup> 488 Protein was resolved with SDS-PAGE under reducing (R) and non-reducing (NR) conditions and visualized by Coomassie<sup>®</sup> Blue staining, showing bands at 45-58 kDa and 106-125 kDa (non-reducible dimer), and 90-120 kDa, respectively.

 Tel: 1-631-559-9269 1-516-512-3133

 Email: [info@creative-biomart.com](mailto:info@creative-biomart.com)  Fax: 1-631-938-8127

 45-1 Ramsey Road, Shirley, NY 11967, USA