

Recombinant Human CD300LB protein, His-tagged

Cat. No. CD300LB-1258H Lot. No. (See product label)

SPECIFICATION

| | |
|-------------------------|--|
| Product Overview | Recombinant Human CD300LB protein(A8K4G0)(18-151aa), fused to N-terminal His tag, was expressed in Yeast. |
| Species | Human |
| Source | Yeast |
| ProteinLength | 18-151aa |
| Form | If the delivery form is liquid, the default storage buffer is Tris/PBS-based buffer, 5%-50% glycerol. If the delivery form is lyophilized powder, the buffer before lyophilization is Tris/PBS-based buffer, 6% Trehalose, pH 8.0. |
| Molecular Mass | 17.2 kDa |
| Purity | Greater than 85% as determined by SDS-PAGE. |
| Storage | Store at -20°C/-80°C upon receipt, aliquoting is necessary for mutiple use. Avoid repeated freeze-thaw cycles. |
| Reconstitution | It is recommended that sterile water be added to the vial to prepare a stock solution of 0.2 ug/ul. Centrifuge the vial at 4°C before opening to recover the entire contents. |

GENE INFORMATION

 Tel: 1-631-559-9269 1-516-512-3133

 Email: info@creative-biomart.com  Fax: 1-631-938-8127

 45-1 Ramsey Road, Shirley, NY 11967, USA

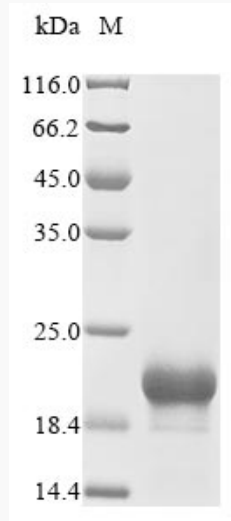
| | |
|------------------------|--|
| Gene Name | CD300LB CD300 molecule-like family member b [Homo sapiens] |
| Official Symbol | CD300LB |
| Synonyms | CD_antigen=CD300b; CD300 antigen-like family member B; CD300 molecule-like family member b; CD300B; CLM 7; CLM7; CLM7_HUMAN; CMRF35 A2; CMRF35-like molecule 7; CMRF35A2; Immune receptor expressed on myeloid cells 3; IREM 3; IREM3; Leukocyte mono-Ig-like receptor 5; LMIR5; TREM 5; TREM5; Triggering receptor expressed on myeloid cells 5; UNQ2530/PRO6029; |
| Gene ID | 124599 |
| mRNA Refseq | NM_174892.2 |
| Protein Refseq | NP_777552.2 |
| MIM | 610705 |
| UniProt ID | A8K4G0 |

 Tel: 1-631-559-9269 1-516-512-3133

 Email: info@creative-biomart.com  Fax: 1-631-938-8127

 45-1 Ramsey Road, Shirley, NY 11967, USA

SDS-PAGE



 Tel: 1-631-559-9269 1-516-512-3133

 Email: info@creative-biomart.com  Fax: 1-631-938-8127

 45-1 Ramsey Road, Shirley, NY 11967, USA