

Recombinant Human CD300LB Protein (18-151 aa), His-tagged

Cat. No. CD300LB-1355H Lot. No. (See product label)

SPECIFICATION

Product Overview	Recombinant Human CD300LB Protein (18-151 aa) is produced by Yeast expression system. This protein is fused with a 6xHis tag at the N-terminal. Protein Description: Full Length of Mature Protein.
Species	Human
Source	Yeast
ProteinLength	18-151 aa
Description	Acts as an activating immune receptor through its interaction with ITAM-bearing adapter TYROBP, and also independently by recruitment of GRB2.
Form	Tris-based buffer, 50% glycerol
Molecular Mass	17.2 kDa
AA Sequence	IQGPESVRAPEQGSLTVQCHYKQGWETYIKWWCRGVRWDTCKILIETRGSEQGEK SDRVSIKDNQKDRTFTVTMEGLRRDDADVWCGIERRGPD LGTQVKVIVDPEGAAS TTASSPTNSNMAVFIGSHKRNHY
Purity	> 90% as determined by SDS-PAGE.
Notes	Repeated freezing and thawing is not recommended. Store working aliquots at 4 centigrade for up to one week.

 Tel: 1-631-559-9269 1-516-512-3133

 Email: info@creative-biomart.com  Fax: 1-631-938-8127

 45-1 Ramsey Road, Shirley, NY 11967, USA

Storage The shelf life is related to many factors, storage state, buffer ingredients, storage temperature and the stability of the protein itself. Generally, the shelf life of liquid form is 6 months at -20 centigrade/-80 centigrade. The shelf life of lyophilized form is 12 months at -20 centigrade/-80 centigrade.

Concentration A hardcopy of COA with reconstitution instruction is sent along with the products. Please refer to it for detailed information.

GENE INFORMATION

Gene Name [CD300LB CD300 molecule-like family member b \[Homo sapiens \]](#)

Official Symbol [CD300LB](#)

Synonyms CD300B; CLM 7; CLM7; CLM7_HUMAN; CMRF35 A2; IREM 3; IREM3; LMIR5; TREM 5; TREM5;

Gene ID [124599](#)

mRNA Refseq [NM_174892.2](#)

Protein Refseq [NP_777552.2](#)

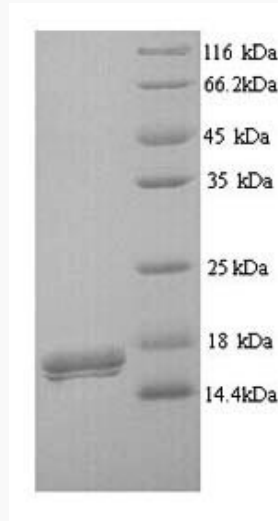
MIM [610705](#)

UniProt ID [A8K4G0](#)

 Tel: 1-631-559-9269 1-516-512-3133

 Email: info@creative-biomart.com  Fax: 1-631-938-8127

 45-1 Ramsey Road, Shirley, NY 11967, USA



(Tris-Glycine gel) Discontinuous SDS-PAGE (reduced) with 5% enrichment gel and 15% separation gel.

 Tel: 1-631-559-9269 1-516-512-3133

 Email: info@creative-biomart.com  Fax: 1-631-938-8127

 45-1 Ramsey Road, Shirley, NY 11967, USA