

Recombinant Human CD300LD protein, His-tagged

Cat. No. CD300LD-4670H **Lot. No.** (See product label)

SPECIFICATION

Product Overview	Recombinant Human CD300LD protein(Q6UXZ3)(19-165 aa), fused with C-terminal His tag, was expressed in Yeast.
Species	Human
Source	Yeast
ProteinLength	19-165 aa
Form	For liquid formulations, the standard storage buffer consists of a Tris or PBS based solution supplemented with 5-50% glycerol. When provided as lyophilized powder, the product undergoes freeze-drying from a Tris- or PBS-based formulation containing 6% trehalose, adjusted to pH 8.0 prior to the lyophilization process.
Molecular Mass	18.2 kDa
AASequence	AKITGPTTVNGSEQGSLTVQCAYGSGWETYLKWRCQGADWNYCNILVKTNGSEQE VKKNRVSIRDNQKNHVFTVTMENLKRDDADSYWCGTERPGIDLGVKVQVTINPGTQ TAVSEWTTTTASLAFTAAATQKTSSPLTRSPLKSTH
Purity	Greater than 95% as determined by SDS-PAGE.
Storage	Store at -20°C/-80°C upon receipt, aliquoting is necessary for mutiple use. Avoid repeated freeze-thaw cycles.

 Tel: 1-631-559-9269 1-516-512-3133

 Email: info@creative-biomart.com  Fax: 1-631-938-8127

 45-1 Ramsey Road, Shirley, NY 11967, USA

Reconstitution Please reconstitute protein in deionized sterile water to a concentration of 0.1-1.0 mg/mL. Aliquot for long-term storage at -80°C.

GENE INFORMATION

Gene Name CD300LD CD300 molecule-like family member d [Homo sapiens]

Official Symbol CD300LD

Synonyms CLM-4; CD300D; CMRF35A4; CMRF35-A4

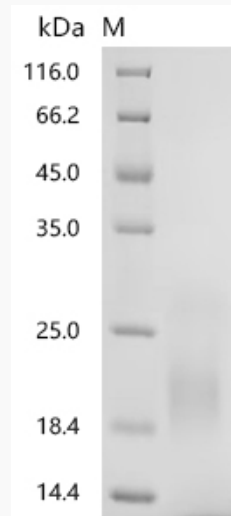
Gene ID 100131439

mRNA Refseq NM_001115152.1

Protein Refseq NP_001108624.1

UniProt ID Q6UXZ3

SDS-PAGE



 Tel: 1-631-559-9269 1-516-512-3133

 Email: info@creative-biomart.com  Fax: 1-631-938-8127

 45-1 Ramsey Road, Shirley, NY 11967, USA