

## Recombinant Rat CD300LF Protein (19-181 aa), His-SUMO-Myc-tagged

Cat. No. CD300LF-2259R Lot. No. (See product label)

### SPECIFICATION

<b>Product Overview</b>	Recombinant Rat CD300LF Protein (19-181 aa) is produced by E. coli expression system. This protein is fused with a 10xHis-SUMO tag at the N-terminal and a Myc tag at the C-terminal. Protein Description: Partial.
<b>Species</b>	Rat
<b>Source</b>	E.coli
<b>ProteinLength</b>	19-181 aa
<b>Description</b>	Acts as an inhibitory receptor for myeloid cells and mast cells. Positively regulates the phagocytosis of apoptotic cells (efferocytosis) via phosphatidylserine (PS) recognition; recognizes and binds PS as a ligand which is expressed on the surface of apoptotic cells. Plays an important role in the maintenance of immune homeostasis, by promoting macrophage-mediated efferocytosis and by inhibiting dendritic cell-mediated efferocytosis. Negatively regulates Fc epsilon receptor-dependent mast cell activation and allergic responses via binding to ceramide and sphingomyelin which act as ligands. May act as a coreceptor for interleukin 4 (IL-4). Associates with and regulates IL-4 receptor alpha-mediated responses by augmenting IL-4- and IL-13-induced signaling. Negatively regulates the Toll-like receptor (TLR) signaling mediated by MYD88 and TRIF through activation of PTPN6/SHP-1 and PTPN11/SHP-2. Inhibits osteoclast formation. Induces macrophage cell death upon engagement.

 Tel: 1-631-559-9269 1-516-512-3133

 Email: [info@creative-biomart.com](mailto:info@creative-biomart.com)  Fax: 1-631-938-8127

 45-1 Ramsey Road, Shirley, NY 11967, USA

<b>Form</b>	Tris-based buffer,50% glycerol
<b>Molecular Mass</b>	38.3 kDa
<b>AA Sequence</b>	AQDPVTGPEEVSGYEQGSLTVWCRYGSWWKDYSKYWCRGPKRSSCEIRVETDAS ERLVKENHVSIRDDQTNFTFTVTMEDLRMSDAGIYWCGITKAGYDHMFKVHVSINPV PTTPTTTSTTTIFTVTTTVKETSTLSTQTSHYSDNRYDSGGVGDGNGFLDLS
<b>Purity</b>	> 90% as determined by SDS-PAGE.
<b>Notes</b>	Repeated freezing and thawing is not recommended. Store working aliquots at 4 centigrade for up to one week.
<b>Storage</b>	The shelf life is related to many factors, storage state, buffer ingredients, storage temperature and the stability of the protein itself. Generally, the shelf life of liquid form is 6 months at -20 centigrade/-80 centigrade. The shelf life of lyophilized form is 12 months at -20 centigrade/-80 centigrade.
<b>Concentration</b>	A hardcopy of COA will be sent along with the products. Please refer to it for detailed information.

## GENE INFORMATION

<b>Gene Name</b>	Cd300lf Cd300 molecule-like family member F [ <i>Rattus norvegicus</i> ]
<b>Official Symbol</b>	CD300LF
<b>Synonyms</b>	CD300LF; CMRF35-like molecule 1; CLM-1; CD300 antigen like family member F; CD300f; RGD1309733;
<b>Gene ID</b>	287818

 Tel: 1-631-559-9269 1-516-512-3133

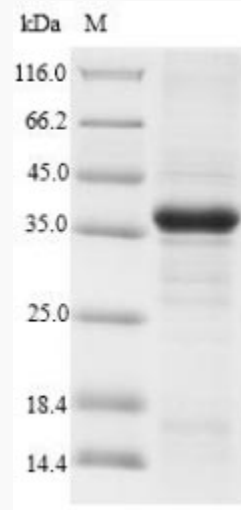
 Email: [info@creative-biomart.com](mailto:info@creative-biomart.com)  Fax: 1-631-938-8127

 45-1 Ramsey Road, Shirley, NY 11967, USA

mRNA Refseq [NM\\_001025111](#)

Protein Refseq [NP\\_001020282](#)

UniProt ID [Q566E6](#)



(Tris-Glycine gel) Discontinuous SDS-PAGE (reduced) with 5% enrichment gel and 15% separation gel.

 Tel: 1-631-559-9269 1-516-512-3133

 Email: [info@creative-biomart.com](mailto:info@creative-biomart.com)  Fax: 1-631-938-8127

 45-1 Ramsey Road, Shirley, NY 11967, USA