

Recombinant Human CD300LG Protein (Leu19-Arg247), C-His tagged

Cat. No. CD300LG-1841H Lot. No. (See product label)

SPECIFICATION

Product Overview	Recombinant human CD300LG (Leu19-Arg247) fused with C-terminal His tag was expressed in Mammalian cells.
Species	Human
Source	Mammalian Cells
ProteinLength	Leu19-Arg247
Form	Lyophilized powder/frozen liquid
Molecular Mass	25.19 kDa
Purity	>90% as determined by SDS-PAGE
Notes	For research use only.
Storage	Use a manual defrost freezer and avoid repeated freeze thaw cycles. Store at 2 to 8 centigrade for one week. Store at -20 to -80 centigrade for twelve months from the date of receipt.
Storage Buffer	Supplied as solution form in PBS or lyophilized from PBS.
Reconstitution	Reconstitute in sterile water for a stock solution.

 Tel: 1-631-559-9269 1-516-512-3133

 Email: info@creative-biomart.com  Fax: 1-631-938-8127

 45-1 Ramsey Road, Shirley, NY 11967, USA



Shipping

They are shipped out with dry ice/blue ice unless customers require otherwise.

GENE INFORMATION

Gene Name CD300LG CD300 molecule-like family member g [Homo sapiens (human)]

Official Symbol CD300LG

Synonyms CLM9; CLM-9; TREM4; TREM-4; NEPMUCIN

Gene ID 146894

mRNA Refseq NM_145273

Protein Refseq NP_660316

MIM 610520

UniProt ID Q6UXG3

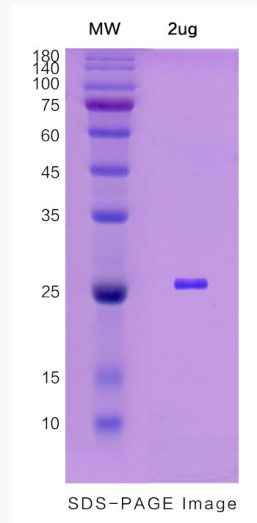
 Tel: 1-631-559-9269 1-516-512-3133

 Email: info@creative-biomart.com  Fax: 1-631-938-8127

 45-1 Ramsey Road, Shirley, NY 11967, USA



SDS-PAGE



Tel: 1-631-559-9269 1-516-512-3133

Email: info@creative-biomart.com Fax: 1-631-938-8127

45-1 Ramsey Road, Shirley, NY 11967, USA