

## Recombinant Human CD302 Protein, GST-Tagged

Cat. No. CD302-0786H Lot. No. (See product label)

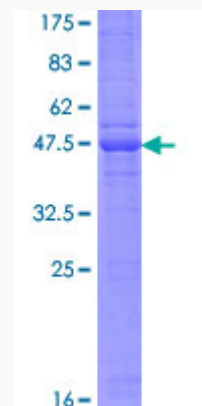
### SPECIFICATION

<b>Product Overview</b>	Human CD302 full-length ORF (AAH20646.1, 1 a.a. - 170 a.a.) recombinant protein with GST-tag at N-terminal.
<b>Species</b>	Human
<b>Source</b>	Wheat Germ
<b>Description</b>	CD302 is a C-type lectin receptor involved in cell adhesion and migration, as well as endocytosis and phagocytosis (Kato et al., 2007 [PubMed 17947679]).[supplied by OMIM, Aug 2008]
<b>Molecular Mass</b>	45.9 kDa
<b>AA Sequence</b>	MISIHNEEENAFILDTLKKQWKGPDDILLGMFYDTDDASFKWFDNSNMTFDKWTDQ DDEDLVDTC AFLHIKTGEWKKGNCEVSSVEGTLCKTAIPYKRKYLSDNHILISALVIA STVILTVLGAIWFLYKKHSDSRFTTVFSTAPQSPYNEDCVLVVGEENEYPVQFD
<b>Applications</b>	Enzyme-linked Immunoabsorbent Assay Western Blot (Recombinant protein) Antibody Production Protein Array
<b>Storage</b>	Store at -80 centigrade. Aliquot to avoid repeated freezing and thawing.
<b>Storage Buffer</b>	50 mM Tris-HCl, 10 mM reduced Glutathione, pH=8.0 in the elution buffer.

 Tel: 1-631-559-9269 1-516-512-3133

 Email: [info@creative-biomart.com](mailto:info@creative-biomart.com)  Fax: 1-631-938-8127

 45-1 Ramsey Road, Shirley, NY 11967, USA

**GENE INFORMATION****Gene Name** CD302 CD302 molecule [ Homo sapiens ]**Official Symbol** CD302**Synonyms** DCL1; DCL-1; BIMLEC; CLEC13A**Gene ID** 9936**mRNA Refseq** NM\_014880**Protein Refseq** NP\_055695**MIM** 612246**UniProt ID** Q8IX05**Quality Control  
Testing**

12.5% SDS-PAGE Stained with Coomassie Blue.

 Tel: 1-631-559-9269 1-516-512-3133 Email: [info@creative-biomart.com](mailto:info@creative-biomart.com)  Fax: 1-631-938-8127 45-1 Ramsey Road, Shirley, NY 11967, USA