

Recombinant Human CD302 Protein, C-His-tagged

Cat. No. CD302-212H **Lot. No.** (See product label)

SPECIFICATION

Product Overview	Recombinant Human CD302 Protein with C-His tag was expressed in E. coli.
Species	Human
Source	E.coli
Description	CD302 potential multifunctional C-type lectin receptor that may play roles in endocytosis and phagocytosis as well as in cell adhesion and migration.
Molecular Mass	~17 kDa
AA Sequence	DCPSSTWIQFQDSCYIFLQEAIKVESIEDVRNQCTDHGADMISIHNEEENAFILDTLKK QWKGPDDILLGMFYDTDDASFKWFDNSNMTFDKWTDQDDDEDLVDTC AFLHIKTG EWKKGNC EVSSVEGTLCKTAIPYKRKYLSDNH
Purity	Transferred into competent cells and the supernatant was purified by NI column affinity chromatography and the purity is > 85% (by SDS-PAGE).
Notes	For research use only, not for use in diagnostic procedure.
Storage	Store at 4 centigrade short term. Aliquot and store at -20 centigrade long term. Avoid freeze-thaw cycles.
Concentration	≥0.5 mg/mL

 Tel: 1-631-559-9269 1-516-512-3133

 Email: info@creative-biomart.com  Fax: 1-631-938-8127

 45-1 Ramsey Road, Shirley, NY 11967, USA

Storage Buffer PBS, 4M Urea, pH7.4

GENE INFORMATION

Gene Name CD302 CD302 molecule [Homo sapiens (human)]

Official Symbol CD302

Synonyms DCL1; DCL-1; BIMLEC; CLEC13A

Gene ID 9936

mRNA Refseq NM_014880

Protein Refseq NP_055695

MIM 612246

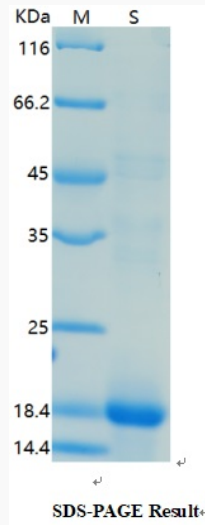
UniProt ID Q8IX05

 Tel: 1-631-559-9269 1-516-512-3133

 Email: info@creative-biomart.com  Fax: 1-631-938-8127

 45-1 Ramsey Road, Shirley, NY 11967, USA

SDS-PAGE



 Tel: 1-631-559-9269 1-516-512-3133

 Email: info@creative-biomart.com  Fax: 1-631-938-8127

 45-1 Ramsey Road, Shirley, NY 11967, USA