

# Recombinant Human CD302 Protein, Myc/DDK-tagged, C13 and N15-labeled

**Cat. No.** CD302-6253H    **Lot. No.** (See product label)

## SPECIFICATION

<b>Product Overview</b>	CD302 MS Standard C13 and N15-labeled recombinant protein (NP_055695) with a C-terminal MYC/DDK tag, was expressed in HEK293 cells.
<b>Species</b>	Human
<b>Source</b>	HEK293
<b>Description</b>	CD302 is a C-type lectin receptor involved in cell adhesion and migration, as well as endocytosis and phagocytosis.
<b>Molecular Mass</b>	26 kDa
<b>AA Sequence</b>	MLRAALPALLLPLLGLAAA VADCPSS TWIQFQDSCYIFLQEAIKVESIEDVRNQCTD HGADMISIHNEEENAFILDTLKKQWKGPD DILLGMFYDTDDASFKWFDNSNMTFDK WTDQDDDEDLVDTCAFLHIKTGEWKKGNCEVSSVEGTLCKTAIPYKRKYLSDNHILI SALVIASTVILTVLGAIWFLYKKHSDSRFTTVFSTAPQSPYNEDCVLVVGEENEYPVQ FDTRTRPLEQKLISEEDLAANDILDYKDDDDKV
<b>Purity</b>	> 80% as determined by SDS-PAGE and Coomassie blue staining
<b>Stability</b>	Stable for 3 months from receipt of products under proper storage and handling conditions.
<b>Storage</b>	Store at -80 centigrade. Avoid repeated freeze-thaw cycles.

 Tel: 1-631-559-9269    1-516-512-3133

 Email: [info@creative-biomart.com](mailto:info@creative-biomart.com)     Fax: 1-631-938-8127

 45-1 Ramsey Road, Shirley, NY 11967, USA

**Concentration** 50 µg/mL as determined by BCA

**Storage Buffer** 100 mM glycine, 25 mM Tris-HCl, pH 7.3.

## GENE INFORMATION

**Gene Name** CD302 CD302 molecule [ Homo sapiens (human) ]

**Official Symbol** CD302

**Synonyms** CD302; CD302 molecule; DCL1; DCL-1; BIMLEC; CLEC13A;

**Gene ID** 9936

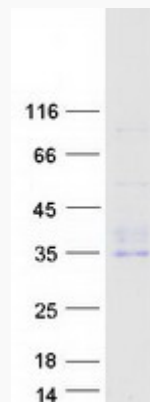
**mRNA Refseq** NM\_014880

**Protein Refseq** NP\_055695

**MIM** 612246

**UniProt ID** Q8IX05

## SDS-PAGE



 Tel: 1-631-559-9269 1-516-512-3133

 Email: [info@creative-biomart.com](mailto:info@creative-biomart.com)  Fax: 1-631-938-8127

 45-1 Ramsey Road, Shirley, NY 11967, USA