

Recombinant Human CD320 Protein (36-231 aa), GST-tagged

Cat. No. CD320-1249H Lot. No. (See product label)

SPECIFICATION

Product Overview	Recombinant Human CD320 Protein (36-231 aa) is produced by E. coli expression system. This protein is fused with a GST tag at the N-terminal. Research Area: Immunology. Protein Description: Partial.
Species	Human
Source	E.coli
ProteinLength	36-231 aa
Description	Germinal center-B (GC-B) cells differentiate into mory B-cells and plasma cells (PC) through interaction with T-cells and follicular dendritic cells (FDC). CD320 augments the proliferation of PC precursors generated by IL-10. Receptor for the cellular uptake of transcobalamin bound cobalamin.
Form	Tris-based buffer,50% glycerol
Molecular Mass	47.1 kDa
AA Sequence	SPLSTPTSAQAAGPSSGSCPPTKFQCRTSGLCVPLTWRCRDLDCSDGSDEEEECRI EPCTQKGQCPPPPGLPCPCTGVSDCSGGTDKCLRNC SRLACLAGE LRCTLSDDCIP LTWRCDGHPDCPDSSDELGCGTNEILPEGDATTMGPPVTLESVTS LRNATTMGPPV TLESVPSVGNATSSSAGDQSGSPTAYGV
Purity	> 90% as determined by SDS-PAGE.

 Tel: 1-631-559-9269 1-516-512-3133

 Email: info@creative-biomart.com  Fax: 1-631-938-8127

 45-1 Ramsey Road, Shirley, NY 11967, USA

Notes	Repeated freezing and thawing is not recommended. Store working aliquots at 4 centigrade for up to one week.
Storage	The shelf life is related to many factors, storage state, buffer ingredients, storage temperature and the stability of the protein itself. Generally, the shelf life of liquid form is 6 months at -20 centigrade/-80 centigrade. The shelf life of lyophilized form is 12 months at -20 centigrade/-80 centigrade.
Concentration	A hardcopy of COA with reconstitution instruction is sent along with the products. Please refer to it for detailed information.

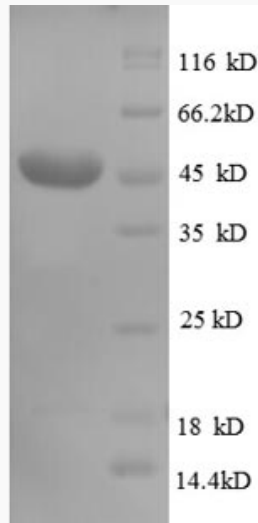
GENE INFORMATION

Gene Name	CD320 CD320 molecule [Homo sapiens (human)]
Official Symbol	CD320
Synonyms	8D6; 8D6A; TCBLR; TCN2R;
Gene ID	51293
UniProt ID	Q9NPF0

 Tel: 1-631-559-9269 1-516-512-3133

 Email: info@creative-biomart.com  Fax: 1-631-938-8127

 45-1 Ramsey Road, Shirley, NY 11967, USA



(Tris-Glycine gel) Discontinuous SDS-PAGE (reduced) with 5% enrichment gel and 15% separation gel.

 Tel: 1-631-559-9269 1-516-512-3133

 Email: info@creative-biomart.com  Fax: 1-631-938-8127

 45-1 Ramsey Road, Shirley, NY 11967, USA