

## Recombinant Human CD33 Protein, GST-Tagged

**Cat. No.** CD33-0791H    **Lot. No.** (See product label)

### SPECIFICATION

<b>Product Overview</b>	Human CD33 full-length ORF (AAH28152.1, 1 a.a. - 364 a.a.) recombinant protein with GST-tag at N-terminal.
<b>Species</b>	Human
<b>Source</b>	Wheat Germ
<b>Description</b>	CD33 (CD33 Molecule) is a Protein Coding gene. Diseases associated with CD33 include Gallbladder Lymphoma and Extracutaneous Mastocytoma. Among its related pathways are Immunoregulatory interactions between a Lymphoid and a non-Lymphoid cell and Natural Killer Cell Receptors: Human Target Cell – NK Cell Ligand-Receptor Interactions. GO annotations related to this gene include receptor activity and carbohydrate binding. An important paralog of this gene is SIGLEC6.
<b>Molecular Mass</b>	65.78 kDa
<b>AA Sequence</b>	MPLLLLLLPLLWAGALAMDPNFWLQVQESVTVQEGLCVLPCTFFHPIPIYYDKNSPVH GYWFREGAIISGDSPVATNKLDQEVQEETQGRFRLGDP SRNNCSLSIVDARRRDN GSYFFRMERGSTKYSYKSPQLSVHVTDLTHRPKILIPGTLEPGH SKNLTCVSWACE QGTPPIFSWLSAAPTSLGPRTHSSVLIITPRPQDHGTNLTCQVKFAGAGVTTERTIQ LNVTYVPQNPTTGIFPGD GSGKQETRAGVVHGAIGGAGVTALLALCLCLIFFIVKTHR RKAARTAVGRNDTHPTTGSASPKHQKSKLHGPTETSSCSGAAPT VEMDEELHYA SLNFHGMNPSKDTSTEYSEVRTQ
<b>Applications</b>	Enzyme-linked Immunoabsorbent Assay

 Tel: 1-631-559-9269    1-516-512-3133

 Email: [info@creative-biomart.com](mailto:info@creative-biomart.com)     Fax: 1-631-938-8127

 45-1 Ramsey Road, Shirley, NY 11967, USA

Western Blot (Recombinant protein)  
 Antibody Production  
 Protein Array

**Storage** Store at -80 centigrade. Aliquot to avoid repeated freezing and thawing.

**Storage Buffer** 50 mM Tris-HCl, 10 mM reduced Glutathione, pH=8.0 in the elution buffer.

## GENE INFORMATION

**Gene Name** CD33 CD33 molecule [ Homo sapiens ]

**Official Symbol** CD33

**Synonyms** CD33; CD33 molecule; CD33 antigen (gp67); myeloid cell surface antigen CD33; FLJ00391; p67; sialic acid binding Ig like lectin 3; SIGLEC 3; SIGLEC3; gp67; sialic acid binding Ig-like lectin 3; sialic acid-binding Ig-like lectin 3; SIGLEC-3;

**Gene ID** 945

**mRNA Refseq** NM\_001082618

**Protein Refseq** NP\_001076087

**MIM** 159590

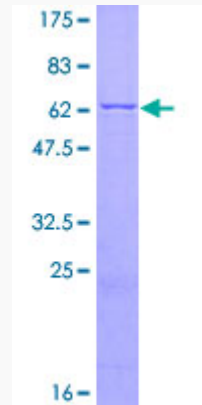
**UniProt ID** P20138

 Tel: 1-631-559-9269 1-516-512-3133

 Email: [info@creative-biomart.com](mailto:info@creative-biomart.com)  Fax: 1-631-938-8127

 45-1 Ramsey Road, Shirley, NY 11967, USA

**Quality Control  
Testing**



12.5% SDS-PAGE Stained with Coomassie Blue.

 Tel: 1-631-559-9269 1-516-512-3133

 Email: [info@creative-biomart.com](mailto:info@creative-biomart.com)  Fax: 1-631-938-8127

 45-1 Ramsey Road, Shirley, NY 11967, USA