

Active Recombinant Full Length Human CD33 Protein, C-Flag-tagged

Cat. No. CD33-139HFL **Lot. No.** (See product label)

SPECIFICATION

Product Overview	Recombinant Full Length Human CD33 Protein, fused to Flag-tag at C-terminus, was expressed in Mammalian cells.
Species	Human
Source	Mammalian Cells
Description	Sialic-acid-binding immunoglobulin-like lectin (Siglec) that plays a role in mediating cell-cell interactions and in maintaining immune cells in a resting state. Preferentially recognizes and binds alpha-2,3- and more avidly alpha-2,6-linked sialic acid-bearing glycans. Upon engagement of ligands such as C1q or sialylated glycoproteins, two immunoreceptor tyrosine-based inhibitory motifs (ITIMs) located in CD33 cytoplasmic tail are phosphorylated by Src-like kinases such as LCK. These phosphorylations provide docking sites for the recruitment and activation of protein-tyrosine phosphatases PTPN6/SHP-1 and PTPN11/SHP-2. In turn, these phosphatases regulate downstream pathways through dephosphorylation of signaling molecules. One of the repressive effect of CD33 on monocyte activation requires phosphoinositide 3-kinase/PI3K.
Form	25 mM Tris HCl, pH 7.3, 100 mM glycine, 10% glycerol.
Bio-activity	Association in cell culture
Molecular Mass	38 kDa

 Tel: 1-631-559-9269 1-516-512-3133

 Email: info@creative-biomart.com  Fax: 1-631-938-8127

 45-1 Ramsey Road, Shirley, NY 11967, USA



AA Sequence

MPLLLLLLPLLWAGALAMDPNFWLQVQESVTVQEGLCVLPCTFFHPIPIYYDKNSPVH
 GYWFREGAIISGD SPVATNKLDQEVQEETQGRFRLLGDPSRNNCSLSIVDARRRDN
 GSYFFRMERGSTKYSYKSPQLSVHVTDLTHRPKILIPGTLEPGHSKNLTCVSWAC
 EQGTPPIFSWLSAAPTSLGPRTHSSVLIITPRPQDHGTNL TCQVKFAGAGVTTERTI
 QLNVTYVPQNPTTGIFPGDGSQKQETRAGVVHGAIGGAGVTALLALCLCLIFF IVKTH
 RRKAARTAVGRNDTHPTTGSASPKHQKSKLHGPTETSSCSGAAPT VEMDEELHY
 ASLNFHGMNP
 SKDTSTEYSEVRTQTRTRPLEQKLISEEDLAANDILDYKDDDDKV

Purity

> 80% as determined by SDS-PAGE and Coomassie blue staining.

Stability

Stable for 12 months from the date of receipt of the product under proper storage and handling conditions. Avoid repeated freeze-thaw cycles.

Storage

Store at -80 centigrade.

Concentration

>50 ug/mL as determined by microplate BCA method.

Preparation

Recombinant protein was captured through anti-DDK affinity column followed by conventional chromatography steps.

Protein Families

Druggable Genome, Transmembrane

Protein Pathways

Hematopoietic cell lineage

Full Length

Full L.

GENE INFORMATION

Gene Name

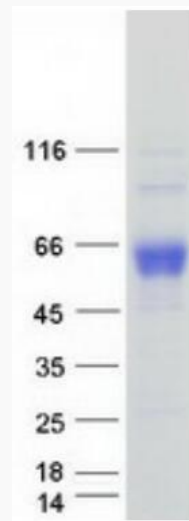
CD33 CD33 molecule [Homo sapiens (human)]

Tel: 1-631-559-9269 1-516-512-3133

Email: info@creative-biomart.com Fax: 1-631-938-8127

45-1 Ramsey Road, Shirley, NY 11967, USA

Official Symbol	CD33
Synonyms	p67; SIGLEC3; SIGLEC-3
Gene ID	945
mRNA Refseq	NM_001772.4
Protein Refseq	NP_001763.3
MIM	159590
UniProt ID	P20138



Coomassie blue staining of purified CD33 protein.

 Tel: 1-631-559-9269 1-516-512-3133

 Email: info@creative-biomart.com  Fax: 1-631-938-8127

 45-1 Ramsey Road, Shirley, NY 11967, USA