

## Recombinant Human CD33 protein, His-Avi-tagged

**Cat. No.** CD33-2568H    **Lot. No.** (See product label)

### SPECIFICATION

<b>Product Overview</b>	Recombinant Human CD33 protein(P20138-1)(Asp18-His259), fused with C-terminal His and Avi tag, was expressed in HEK293.
<b>Species</b>	Human
<b>Source</b>	HEK293
<b>ProteinLength</b>	Asp18-His259
<b>Tag</b>	C-His-Avi
<b>Form</b>	Lyophilized from 0.22µm filtered solution in PBS (pH 7.4). Normally 5% trehalose is added as protectant before lyophilization.
<b>Bio-activity</b>	Immobilized Human Siglec-3, His Tag at 1 µg/ml (100 µl/Well) on the plate. Dose response curve for Anti-Siglec-3 Antibody, hFc Tag with the EC50 of 3.4 ng/ml determined by ELISA.
<b>Molecular Mass</b>	The protein has a predicted MW of 29.6 kDa. Due to glycosylation, the protein migrates to 52-60 kDa based on Tris-Bis PAGE result.
<b>Endotoxin</b>	Less than 1EU per µg by the LAL method.
<b>Purity</b>	> 95% as determined by Tris-Bis PAGE; > 95% as determined by HPLC

 Tel: 1-631-559-9269    1-516-512-3133

 Email: [info@creative-biomart.com](mailto:info@creative-biomart.com)     Fax: 1-631-938-8127

 45-1 Ramsey Road, Shirley, NY 11967, USA

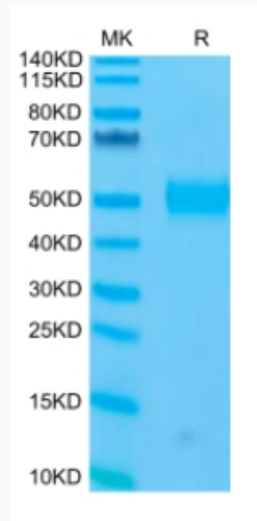
<b>Storage</b>	Reconstituted protein stable at -80°C for 12 months, 4°C for 1 week. Use a manual defrost freezer and avoid repeated freeze-thaw cycles.
<b>Reconstitution</b>	Centrifuge tubes before opening. Reconstituting to a concentration more than 100 µg/ml is recommended. Dissolve the lyophilized protein in distilled water.
<b>GENE INFORMATION</b>	
<b>Gene Name</b>	CD33 CD33 molecule [ Homo sapiens ]
<b>Official Symbol</b>	CD33
<b>Synonyms</b>	CD33; CD33 molecule; CD33 antigen (gp67); myeloid cell surface antigen CD33; FLJ00391; p67; sialic acid binding Ig like lectin 3; SIGLEC 3; SIGLEC3; gp67; sialic acid binding Ig-like lectin 3; sialic acid-binding Ig-like lectin 3; SIGLEC-3;
<b>Gene ID</b>	945
<b>mRNA Refseq</b>	NM_001082618
<b>Protein Refseq</b>	NP_001076087
<b>MIM</b>	159590
<b>UniProt ID</b>	P20138

 Tel: 1-631-559-9269 1-516-512-3133

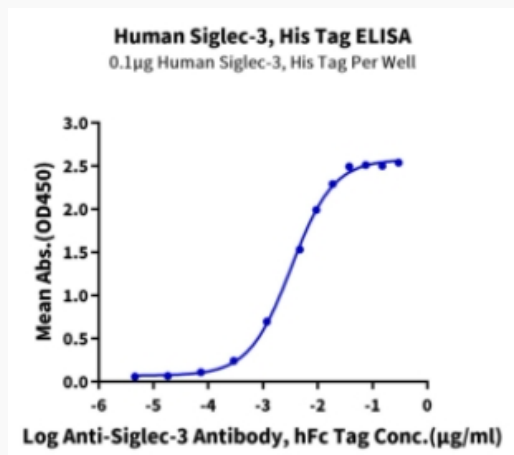
 Email: [info@creative-biomart.com](mailto:info@creative-biomart.com)  Fax: 1-631-938-8127

 45-1 Ramsey Road, Shirley, NY 11967, USA

**Tris-Bis PAGE**



**ELISA Data**



 Tel: 1-631-559-9269 1-516-512-3133

 Email: [info@creative-biomart.com](mailto:info@creative-biomart.com)  Fax: 1-631-938-8127

 45-1 Ramsey Road, Shirley, NY 11967, USA