

## Recombinant Human CD33 protein, His-tagged

Cat. No. CD33-267H Lot. No. (See product label)

### SPECIFICATION

**Product Overview** Recombinant Human CD33 protein (Lys25-Asp209), fused to His tag at C-terminus, was expressed in human 293 cells (HEK293).

**Species** Human

**Source** HEK293

**ProteinLength** 185

**Description** T-cell surface antigen CD2 is also known as Erythrocyte receptor, LFA-2, LFA-3 receptor, Rosette receptor, T-cell surface antigen T11/Leu-5 and SRBC, is a single-pass type I membrane protein found on the surface of T cells and natural killer (NK) cells. CD2 is a member of the immunoglobulin superfamily. CD2/SRBC contains 1 Ig-like C2-type (immunoglobulin-like) domain and 1 Ig-like V-type (immunoglobulin-like) domain. CD2/SRBC interacts with other adhesion molecules, such as lymphocyte function-associated antigen-3 (LFA-3/CD58) in humans, or CD48 in rodents, which are expressed on the surfaces of other cells. In addition to its adhesive properties, CD2 also acts as a co-stimulatory molecule on T and NK cells. CD2 is a specific marker for T cells and NK cells, and can therefore be used in immunohistochemistry to identify the presence of such cells in tissue sections.

**Form** Lyophilized from 0.22 um filtered solution in PBS, pH7.4, 10% trehalose.

**Molecular Mass** The protein has a calculated MW of 22.7 kDa. The protein migrates as 33-40 kDa under reducing (R) condition (SDS-PAGE) due to glycosylation.

 Tel: 1-631-559-9269 1-516-512-3133

 Email: [info@creative-biomart.com](mailto:info@creative-biomart.com)  Fax: 1-631-938-8127

 45-1 Ramsey Road, Shirley, NY 11967, USA

<b>Endotoxin</b>	Less than 1.0 EU per ug by the LAL method.
<b>Purity</b>	>95% as determined by SDS-PAGE.
<b>Storage</b>	<p>For long term storage, the product should be stored at lyophilized state at -20 centigrade or lower.</p> <p>Please avoid repeated freeze-thaw cycles.</p> <p>This product is stable after storage at:</p> <p>-20 centigrade to -70 centigrade for 12 months in lyophilized state;            -70 centigrade for 3 months under sterile conditions after reconstitution.</p>
<b>Reconstitution</b>	It is recommended that sterile water be added to the vial to prepare a stock solution of 0.2 ug/ul. Centrifuge the vial at 4°C before opening to recover the entire contents.

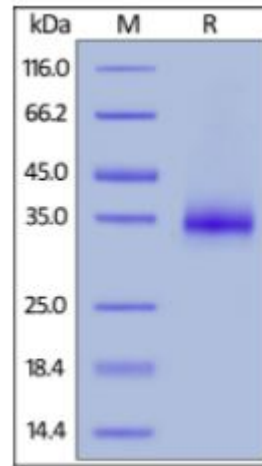
## GENE INFORMATION

<b>Gene Name</b>	CD33
<b>Official Symbol</b>	CD33
<b>Synonyms</b>	CD33; CD33 molecule; CD33 antigen (gp67); myeloid cell surface antigen CD33; FLJ00391; p67; sialic acid binding Ig like lectin 3; SIGLEC 3; SIGLEC3; gp67; sialic acid binding Ig-like lectin 3; sialic acid-binding Ig-like lectin 3; SIGLEC-3
<b>Gene ID</b>	945
<b>mRNA Refseq</b>	NM_001082618
<b>Protein Refseq</b>	NP_001076087
<b>MIM</b>	159590

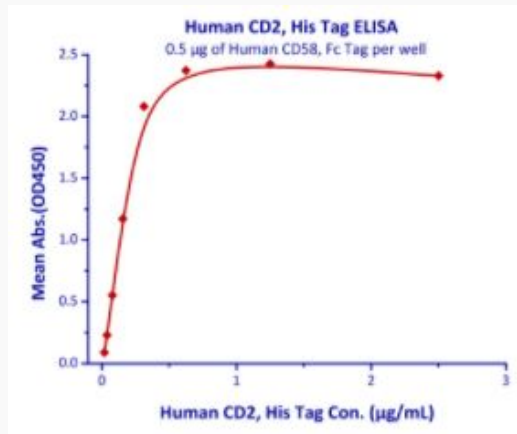
 Tel: 1-631-559-9269 1-516-512-3133

 Email: [info@creative-biomart.com](mailto:info@creative-biomart.com)  Fax: 1-631-938-8127

 45-1 Ramsey Road, Shirley, NY 11967, USA

**UniProt ID**
**P20138**
**SDS-PAGE of CD33-267H**


Human CD2, His Tag on SDS-PAGE under reducing (R) condition. The gel was stained overnight with Coomassie Blue. The purity of the protein is greater than 95%.

**Bioactivity-ELISA of CD33-267H**


Immobilized Human CD58, Fc Tag at 5 µg/mL (100 µL/well) can bind Human CD2,

 Tel: 1-631-559-9269 1-516-512-3133

 Email: [info@creative-biomart.com](mailto:info@creative-biomart.com)  Fax: 1-631-938-8127

 45-1 Ramsey Road, Shirley, NY 11967, USA



His Tag with a linear range of 0.02-0.313 µg/mL (QC tested).

 Tel: 1-631-559-9269 1-516-512-3133

 Email: [info@creative-biomart.com](mailto:info@creative-biomart.com)  Fax: 1-631-938-8127

 45-1 Ramsey Road, Shirley, NY 11967, USA