

Active Recombinant Human CD33 Protein, Fc-tagged, Atto 488 conjugated

Cat. No. CD33-27H **Lot. No.** (See product label)

SPECIFICATION

Product Overview	Recombinant human Atto 488 conjugated Siglec-3/CD33 (Asp18-His259) (Val257Leu) protein with a human IgG1 (Pro100-Lys330) Fc tag at C-terminus was expressed in mouse myeloma cell line.
Species	Human
Source	NS0
Description	Enables protein phosphatase binding activity and sialic acid binding activity. Involved in several processes, including negative regulation of cytokine production; negative regulation of monocyte activation; and positive regulation of protein tyrosine phosphatase activity. Located in several cellular components, including Golgi apparatus; external side of plasma membrane; and peroxisome.
Form	Disulfide-linked homodimer Labeled with Atto 488 via amines Excitation Wavelength: 501 nm Emission Wavelength: 523 nm
Bio-activity	Measured by flow cytometry for its ability to bind anti-Human Siglec-3/CD33 Monoclonal Antibody conjugated fluorescent beads.
Molecular Mass	53.4 kDa

 Tel: 1-631-559-9269 1-516-512-3133

 Email: info@creative-biomart.com  Fax: 1-631-938-8127

 45-1 Ramsey Road, Shirley, NY 11967, USA

N-terminal Sequence Analysis	Asp18
Endotoxin	<1.0 EU/μg of the protein by the LAL method.
Purity	>90%, by SDS-PAGE visualized with Silver Staining and quantitative densitometry by Coomassie® Blue Staining.
Storage	Protect from light. Use a manual defrost freezer and avoid repeated freeze-thaw cycles. 6 months from date of receipt, -20 to -70 centigrade as supplied. 1 month, 2 to 8 centigrade under sterile conditions after opening. 3 months, -20 to -70 centigrade under sterile conditions after opening.
Storage Buffer	Supplied as a 0.2 μm filtered solution in PBS with BSA as a carrier protein.
Shipping	The product is shipped with dry ice or equivalent.
Conjugation	Alexa Fluor 488

GENE INFORMATION

Gene Name	CD33 CD33 molecule [Homo sapiens (human)]
Official Symbol	CD33
Synonyms	CD33; CD33 molecule; p67; SIGLEC3; SIGLEC-3; myeloid cell surface antigen CD33; CD33 antigen (gp67); CD33 molecule transcript; gp67; sialic acid-binding Ig-like lectin 3
Gene ID	945

 Tel: 1-631-559-9269 1-516-512-3133

 Email: info@creative-biomart.com  Fax: 1-631-938-8127

 45-1 Ramsey Road, Shirley, NY 11967, USA

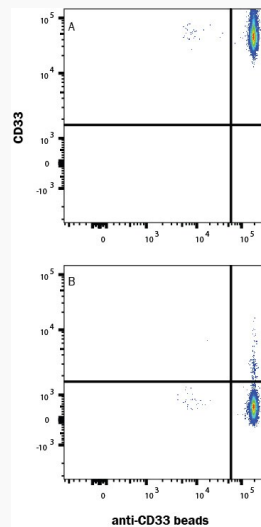
mRNA Refseq [M23197](#)

Protein Refseq [AAA51948](#)

MIM [159590](#)

UniProt ID [P20138](#)

FC



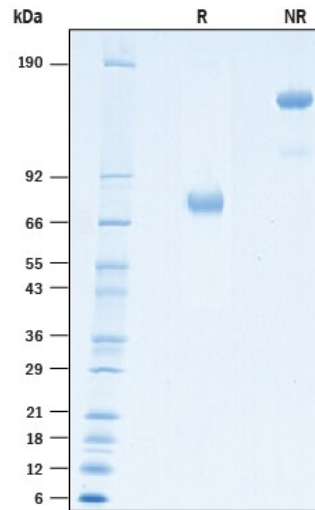
Fluorescent beads conjugated to anti-Human Siglec 3/CD33 Monoclonal Antibody were stained with (A) Recombinant Human Siglec 3/CD33 Protein, Atto 488 Conjugate or (B) unstained.

 Tel: 1-631-559-9269 1-516-512-3133

 Email: info@creative-biomart.com  Fax: 1-631-938-8127

 45-1 Ramsey Road, Shirley, NY 11967, USA

SDS-PAGE



2 µg/lane of Recombinant Human Siglec-3/CD33 Protein, Atto 488 Conjugate was resolved with SDS-PAGE under reducing (R) and non-reducing (NR) conditions and visualized by Coomassie® Blue staining, showing bands at 67-80 kDa and 134-160 kDa, respectively.

 Tel: 1-631-559-9269 1-516-512-3133

 Email: info@creative-biomart.com  Fax: 1-631-938-8127

 45-1 Ramsey Road, Shirley, NY 11967, USA