

## Recombinant Human CD36 protein, His-tagged

Cat. No. CD36-3184H Lot. No. (See product label)

### SPECIFICATION

<b>Product Overview</b>	Recombinant Human CD36 protein(NP_001001547.1)(Gly 30-Asn 439) was expressed in HEK293, fused with a polyhistidine tag at the C-terminus and a signal peptide at the N-terminus.
<b>Species</b>	Human
<b>Source</b>	HEK293
<b>ProteinLength</b>	30-439 aa
<b>Form</b>	Lyophilized from sterile PBS, pH 7.4.
<b>Bio-activity</b>	Measured by its binding ability in a functional ELISA. Immobilized human CD36 at 20 µg/ml (100 µl/well) can bind biotinylated human RSPO1 with a linear ranger of 0.032-4 µg/ml.
<b>Molecular Mass</b>	The secreted recombinant human CD36 comprises 420 amino acids with a predicted molecular mass of 48 kDa. As a result of glycosylation, the apparent molecular mass of rh CD36 is approximately 70-80 kDa in SDS-PAGE under reducing conditions.
<b>Endotoxin</b>	< 1.0 EU per µg of the protein as determined by the LAL method.
<b>Purity</b>	> 88 % as determined by SDS-PAGE
<b>Storage</b>	Store it under sterile conditions at -20°C to -80°C upon receiving. Recommend to

 Tel: 1-631-559-9269 1-516-512-3133

 Email: [info@creative-biomart.com](mailto:info@creative-biomart.com)  Fax: 1-631-938-8127

 45-1 Ramsey Road, Shirley, NY 11967, USA

aliquot the protein into smaller quantities for optimal storage. Avoid repeated freeze-thaw cycles.

**Reconstitution**

It is recommended that sterile water be added to the vial to prepare a stock solution of 0.2 ug/ul. Centrifuge the vial at 4°C before opening to recover the entire contents.

## GENE INFORMATION

**Gene Name** [CD36 CD36 molecule \(thrombospondin receptor\) \[ Homo sapiens \]](#)

**Official Symbol** [CD36](#)

**Synonyms**

CD36; CD36 molecule (thrombospondin receptor); CD36 antigen (collagen type I receptor, thrombospondin receptor); platelet glycoprotein 4; FAT; GP3B; GP4; GPIV; SCARB3; GPIIIB; PAS IV; PAS-4 protein; glycoprotein IIIb; cluster determinant 36; fatty acid translocase; platelet glycoprotein IV; scavenger receptor class B, member 3; leukocyte differentiation antigen CD36; CHDS7; PASIV; BDPLT10;

**Gene ID** [948](#)

**mRNA Refseq** [NM\\_000072](#)

**Protein Refseq** [NP\\_000063](#)

**MIM** [173510](#)

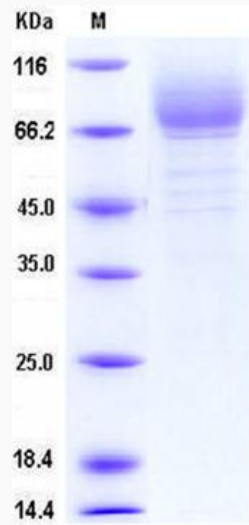
**UniProt ID** [P16671](#)

 Tel: 1-631-559-9269 1-516-512-3133

 Email: [info@creative-biomart.com](mailto:info@creative-biomart.com)  Fax: 1-631-938-8127

 45-1 Ramsey Road, Shirley, NY 11967, USA

**SDS-PAGE**



 Tel: 1-631-559-9269 1-516-512-3133

 Email: [info@creative-biomart.com](mailto:info@creative-biomart.com)  Fax: 1-631-938-8127

 45-1 Ramsey Road, Shirley, NY 11967, USA