

Recombinant Rhesus monkey CD36 Protein, Fc-tagged

Cat. No. CD36-737R Lot. No. (See product label)

SPECIFICATION

Product Overview Recombinant Rhesus monkey CD36 Protein(Gly30-Asn439), fused to Fc region of human IgG1 at the C-terminus, was expressed in human 293 cells (HEK293).

Species Rhesus macaque

Source HEK293

ProteinLength Gly30-Asn439

Description

The cluster of differentiation (CD) system is commonly used as cell markers in immunophenotyping. Different kinds of cells in the immune system can be identified through the surface CD molecules which associating with the immune function of the cell. There are more than 32 CD unique clusters and subclusters have been identified. Some of the CD molecules serve as receptors or ligands important to the cell through initiating a signal cascade which then alter the behavior of the cell. Some CD proteins do not take part in cell signal process but have other functions such as cell adhesion. Cluster of differentiation 36 (CD36), also known as FAT, SCARB3, GP88, glycoprotein IV (gpIV) and glycoprotein IIIb (gpIIIb), is a member of the CD system as well as the class B scavenger receptor family of cell surface proteins. CD36 can be found on the surface of many cell types in vertebrate animals and it consists of 472 amino acids and is extensively glycosylated. It is an integral membrane protein primarily serving as receptors for thrombospondin and collagen and by the erythrocytes infected with the human malaria parasite. The role of CD36 as a cell surface receptor has been extended to that of a signal transduction

 Tel: 1-631-559-9269 1-516-512-3133

 Email: info@creative-biomart.com  Fax: 1-631-938-8127

 45-1 Ramsey Road, Shirley, NY 11967, USA

	molecule.
Predicted N Terminal	Gly30
Form	Lyophilized from sterile PBS, pH 7.4, 5% trehalose, 5% mannitol and 0.01% Tween80.
Molecular Mass	The recombinant rhesus CD36 comprises 651 amino acids and has a calculated molecular mass of 73.6 KDa.
Endotoxin	< 1.0 EU per µg of the protein as determined by the LAL method.
Purity	> 70% as determined by SDS-PAGE.
Stability	Samples are stable for up to twelve months from date of receipt at -20 to -80 centigrade.
Storage	Store it under sterile conditions at -20 to -80 centigrade. It is recommended that the protein be aliquoted for optimal storage. Avoid repeated freeze-thaw cycles.
Reconstitution	It is recommended that sterile water be added to the vial to prepare a stock solution of 0.2 ug/ul. Centrifuge the vial at 4°C before opening to recover the entire contents.
Shipping	In general, recombinant proteins are provided as lyophilized powder which are shipped at ambient temperature. Bulk packages of recombinant proteins are provided as frozen liquid. They are shipped out with blue ice unless customers require otherwise.

GENE INFORMATION

Gene Name **CD36**

 Tel: 1-631-559-9269 1-516-512-3133

 Email: info@creative-biomart.com  Fax: 1-631-938-8127

 45-1 Ramsey Road, Shirley, NY 11967, USA

Official Symbol CD36

Synonyms CD36 molecule

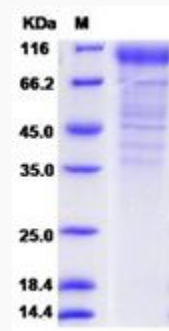
Gene ID 574296

mRNA Refseq NM_001032913.1

Protein Refseq NP_001028085.1

UniProt ID Q6J512

SDS-PAGE of CD36-737R



 Tel: 1-631-559-9269 1-516-512-3133

 Email: info@creative-biomart.com  Fax: 1-631-938-8127

 45-1 Ramsey Road, Shirley, NY 11967, USA