

## Recombinant Human CD38 Protein, His-tagged

Cat. No. CD38-194H Lot. No. (See product label)

### SPECIFICATION

<b>Product Overview</b>	Recombinant Human CD38 Protein with His tag was expressed in E. coli.
<b>Species</b>	Human
<b>Source</b>	E.coli
<b>Description</b>	<p>Cyclic ADP-ribose hydrolase 1 (CD38) is a transmembrane protein involved in several important biological processes, including immune response, insulin secretion, and social behavior. Originally described as a glycosylated immune cell surface marker, additional research determined that CD38 is a multifunctional enzyme that catalyzes the synthesis and hydrolysis of cyclic ADP ribose (cADPR) from NAD. Under acidic conditions, CD38 also catalyzes the synthesis of nicotinic acid adenine dinucleotide phosphate (NAADP) from NADP+. Both cADPR and NAADP act as calcium ion mobilizing messengers that target different intracellular Ca<sup>2+</sup> stores. Since CD38 is the primary mammalian NAD<sup>+</sup> glycohydrolase responsible for NAD<sup>+</sup> metabolism, CD38 may be a valuable therapeutic target for treatment of metabolic diseases regulated by NAD<sup>+</sup>-dependent pathways. CD38 has also been considered a possible therapeutic target for antibody-mediated therapy for myeloma and chronic lymphocytic leukemia.</p>
<b>Molecular Mass</b>	~36 kDa
<b>AA Sequence</b>	VPRWRQQWSGPGTTKRFPETVLARCVKYTEIHPEMRHVDCQSVWDAFKGAFISKH PCNITEEDYQPLMKLGTQTVPCNKILLWSRIKDLAQFTQVQRDMFTLEDTLLGYLA

 Tel: 1-631-559-9269 1-516-512-3133

 Email: [info@creative-biomart.com](mailto:info@creative-biomart.com)  Fax: 1-631-938-8127

 45-1 Ramsey Road, Shirley, NY 11967, USA

DDLTWCGEFNTSKINYQSCPDRKDCSNNPVSVFWKTVSRRFAEAACDVVHVMLN  
 GSRSKIFDKNSTFGSVEVHNLQPEKVQTLAWVIHGGREDSRDLCQDPTIKELESIIS  
 KRNIQFSCCKNIYRPDKFLQCVKNPEDSSCTSEI

**Purity**

Transferred into competent cells and the supernatant was purified by NI column affinity chromatography and the purity is > 85% (by SDS-PAGE).

**Notes**

For research use only, not for use in diagnostic procedure.

**Storage**

Store at 4 centigrade short term. Aliquot and store at -20 centigrade long term. Avoid freeze-thaw cycles.

**Concentration**

≥0.5 mg/mL

**Storage Buffer**

PBS, 4M Urea, pH7.4

## GENE INFORMATION

**Gene Name**

CD38 CD38 molecule [ Homo sapiens (human) ]

**Official Symbol**

CD38

**Synonyms**

CD38; CD38 molecule; CD38 antigen (p45); ADP-ribosyl cyclase 1; ADP ribosyl cyclase 1; NAD(+) nucleosidase; cADPr hydrolase 1; cyclic ADP-ribose hydrolase 1; ADP-ribosyl cyclase/cyclic ADP-ribose hydrolase; T10;

**Gene ID**

952

**mRNA Refseq**

NM\_001775

**Protein Refseq**

NP\_001766

 Tel: 1-631-559-9269 1-516-512-3133

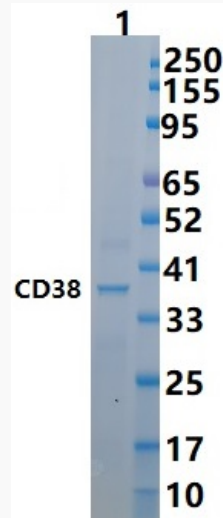
 Email: [info@creative-biomart.com](mailto:info@creative-biomart.com)  Fax: 1-631-938-8127

 45-1 Ramsey Road, Shirley, NY 11967, USA

MIM 107270

UniProt ID P28907

SDS-PAGE



 Tel: 1-631-559-9269 1-516-512-3133

 Email: [info@creative-biomart.com](mailto:info@creative-biomart.com)  Fax: 1-631-938-8127

 45-1 Ramsey Road, Shirley, NY 11967, USA