

## Recombinant Human CD38 Protein (ECD), His-tagged(C-ter)

Cat. No. CD38-30H Lot. No. (See product label)

### SPECIFICATION

<b>Product Overview</b>	Recombinant Human CD38 Protein (ECD) with His tag (C-ter) was expressed in HEK293.
<b>Species</b>	Human
<b>Source</b>	HEK293
<b>ProteinLength</b>	Val43-Ile300
<b>Description</b>	<p>The protein encoded by this gene is a non-lineage-restricted, type II transmembrane glycoprotein that synthesizes and hydrolyzes cyclic adenosine 5'-diphosphate-ribose, an intracellular calcium ion mobilizing messenger. The release of soluble protein and the ability of membrane-bound protein to become internalized indicate both extracellular and intracellular functions for the protein. This protein has an N-terminal cytoplasmic tail, a single membrane-spanning domain, and a C-terminal extracellular region with four N-glycosylation sites. Crystal structure analysis demonstrates that the functional molecule is a dimer, with the central portion containing the catalytic site. It is used as a prognostic marker for patients with chronic lymphocytic leukemia. Alternative splicing results in multiple transcript variants. [provided by RefSeq, Sep 2015]</p>
<b>Form</b>	Powder
<b>Endotoxin</b>	Endotoxin level is less than 0.1 EU/μg of the protein, as determined by the LAL test.

 Tel: 1-631-559-9269 1-516-512-3133

 Email: [info@creative-biomart.com](mailto:info@creative-biomart.com)  Fax: 1-631-938-8127

 45-1 Ramsey Road, Shirley, NY 11967, USA

<b>Purity</b>	> 95% (by SDS-PAGE)
<b>Applications</b>	Binding, ELISA, SDS-PAGE
<b>Notes</b>	For laboratory research only, not for drug, diagnostic or other use.
<b>Storage</b>	Lyophilized protein should be stored at -20°C or -80°C. After reconstitution, aliquot and store at -20°C for up to one month, at 2-8°C for up to one week. Storage in frost free freezers is not recommended. Avoid repeated freeze/thaw cycles. Suggest spin the vial prior to opening.
<b>Storage Buffer</b>	PBS (pH 7.4)
<b>Reconstitution</b>	Reconstitute to a concentration of 0.1-0.5 mg/ml in sterile distilled water.

## GENE INFORMATION

<b>Gene Name</b>	CD38 CD38 molecule [ Homo sapiens ]
<b>Official Symbol</b>	CD38
<b>Synonyms</b>	CD38; CD38 molecule; CD38 antigen (p45); ADP-ribosyl cyclase 1; ADP ribosyl cyclase 1; NAD(+) nucleosidase; cADPr hydrolase 1; cyclic ADP-ribose hydrolase 1; ADP-ribosyl cyclase/cyclic ADP-ribose hydrolase; T10;
<b>Gene ID</b>	952
<b>mRNA Refseq</b>	NM_001775
<b>Protein Refseq</b>	NP_001766

 Tel: 1-631-559-9269 1-516-512-3133

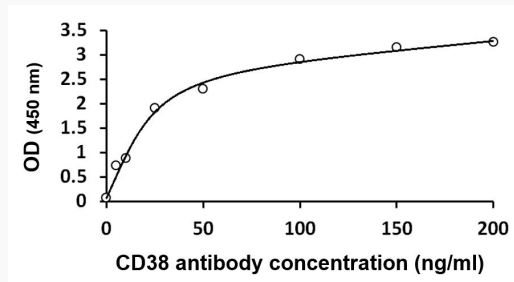
 Email: [info@creative-biomart.com](mailto:info@creative-biomart.com)  Fax: 1-631-938-8127

 45-1 Ramsey Road, Shirley, NY 11967, USA

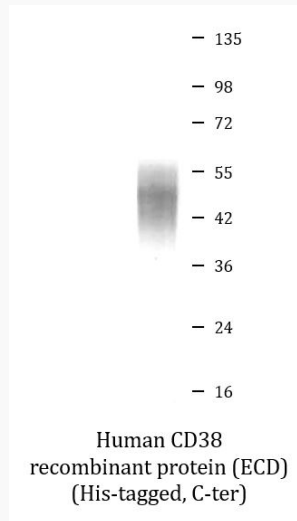
**MIM** 107270

**UniProt ID** P28907

**ELISA**



**SDS-PAGE**



 Tel: 1-631-559-9269 1-516-512-3133

 Email: [info@creative-biomart.com](mailto:info@creative-biomart.com)  Fax: 1-631-938-8127

 45-1 Ramsey Road, Shirley, NY 11967, USA