

Active Recombinant Human CD38 Protein, MlgG2a Fc-tagged, low endotoxin

Cat. No. CD38-362H **Lot. No.** (See product label)

SPECIFICATION

Product Overview	Recombinant Human CD38 Protein, MlgG2a Fc-tagged, low endotoxin is expressed from human 293 cells (HEK293). It contains AA Val 43 - Ile 300 (Accession # P28907-1). Predicted N-terminus: Val 43. This protein carries a mouse IgG2a Fc tag at the C-terminus. The protein has a calculated MW of 56.9 kDa. The protein migrates as 65-70 kDa under reducing (R) condition (SDS-PAGE) due to glycosylation.
Species	Human
Source	HEK293
ProteinLength	Val 43 - Ile 300
Form	Lyophilized from 0.22 µm filtered solution in 50 mM Tris, 100 mM Glycine, pH7.5. Normally trehalose is added as protectant before lyophilization.
Bio-activity	Recombinant Human CD38 Protein, MlgG2a Fc-tagged, low endotoxin at 5 µg/mL (100 µL/well) can bind Anti-CD38 MAb, Human IgG1 with a linear range of 0.4-2 ng/mL (QC tested).
Molecular Mass	56.9 kDa
Endotoxin	Less than 0.1 EU per µg by the LAL method.
Purity	>95% as determined by SDS-PAGE.

 Tel: 1-631-559-9269 1-516-512-3133

 Email: info@creative-biomart.com  Fax: 1-631-938-8127

 45-1 Ramsey Road, Shirley, NY 11967, USA

Notes	Please avoid repeated freeze-thaw cycles.
Stability	No activity loss is observed after storage at: 4-8 centigrade for 12 months in lyophilized state; -70 centigrade for 3 months under sterile conditions after reconstitution.
Storage	For long term storage, the product should be stored at lyophilized state at -20 centigrade or lower.
Reconstitution	It is recommended that sterile water be added to the vial to prepare a stock solution of 0.2 mg/ml. Centrifuge the vial at 4 centigrade before opening to recover the entire contents.

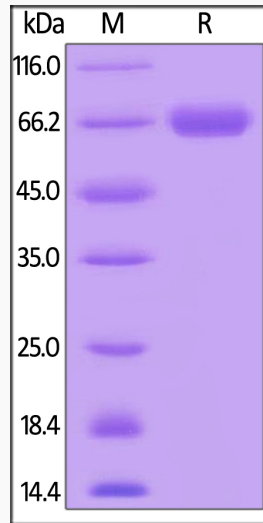
GENE INFORMATION

Gene Name	CD38 CD38 molecule [Homo sapiens]
Official Symbol	CD38
Synonyms	CD38; CD38 molecule; CD38 antigen (p45); ADP-ribosyl cyclase 1; T10;
Gene ID	952
mRNA Refseq	NM_001775
Protein Refseq	NP_001766
MIM	107270
UniProt ID	P28907

 Tel: 1-631-559-9269 1-516-512-3133

 Email: info@creative-biomart.com  Fax: 1-631-938-8127

 45-1 Ramsey Road, Shirley, NY 11967, USA



 Tel: 1-631-559-9269 1-516-512-3133

 Email: info@creative-biomart.com  Fax: 1-631-938-8127

 45-1 Ramsey Road, Shirley, NY 11967, USA