

## Recombinant Human CD38 protein(46-300aa), GST-tagged

Cat. No. CD38-3928H Lot. No. (See product label)

### SPECIFICATION

<b>Product Overview</b>	Recombinant Human CD38 protein(P28907)(46-300aa), fused with N-terminal GST tag, was expressed in E. coli.
<b>Species</b>	Human
<b>Source</b>	E.coli
<b>ProteinLength</b>	46-300aa
<b>Form</b>	If the delivery form is liquid, the default storage buffer is Tris/PBS-based buffer, 5%-50% glycerol. If the delivery form is lyophilized powder, the buffer before lyophilization is Tris/PBS-based buffer, 6% Trehalose, pH 8.0.
<b>Molecular Mass</b>	56.2 kDa
<b>Purity</b>	Greater than 85% as determined by SDS-PAGE.
<b>Storage</b>	Store at -20°C/-80°C upon receipt, aliquoting is necessary for mutiple use. Avoid repeated freeze-thaw cycles.
<b>Reconstitution</b>	We recommend that this vial be briefly centrifuged prior to opening to bring the contents to the bottom. Please reconstitute protein in deionized sterile water to a concentration of 0.1-1.0 mg/mL. We recommend to add 5-50% of glycerol (final concentration) and aliquot for long-term storage at -20°C/-80°C.

 Tel: 1-631-559-9269 1-516-512-3133

 Email: [info@creative-biomart.com](mailto:info@creative-biomart.com)  Fax: 1-631-938-8127

 45-1 Ramsey Road, Shirley, NY 11967, USA

**AA Sequence**

WRQQWSGPGTTKRFPETVLARCVKYTEIHPEMRHVDCQSVWDAFKGAFISKHPCN  
 ITEEDYQPLMKLGTQTVPCNKILLWSRIKDLAHQFTQVQRDMFTLEDTLLGYLADDLT  
 WCGEFNTSKINYQSCPDWRKDCSNNPVSVFWKTVSRRFAEAACDVVHVMLNGSR  
 SKIFDKNSTFGSVEVHNLQPEKVQTLAWVIHGGREDSRDLCQDPTIKELESIIISKRNI  
 QFSCKNIYRPDKFLQCVKNPEDSSCTSEI

## GENE INFORMATION

**Gene Name** [CD38 CD38 molecule \[ Homo sapiens \]](#)

**Official Symbol** [CD38](#)

**Synonyms** CD38; CD38 molecule; CD38 antigen (p45); ADP-ribosyl cyclase 1; ADP ribosyl cyclase 1; NAD(+) nucleosidase; cADPr hydrolase 1; cyclic ADP-ribose hydrolase 1; ADP-ribosyl cyclase/cyclic ADP-ribose hydrolase; T10;

**Gene ID** [952](#)

**mRNA Refseq** [NM\\_001775](#)

**Protein Refseq** [NP\\_001766](#)

**MIM** [107270](#)

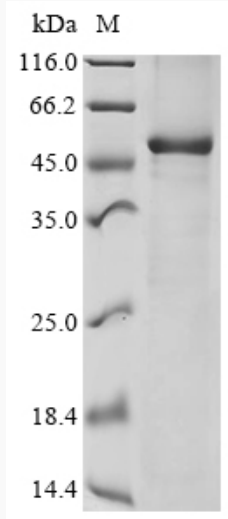
**UniProt ID** [P28907](#)

 Tel: 1-631-559-9269 1-516-512-3133

 Email: [info@creative-biomart.com](mailto:info@creative-biomart.com)  Fax: 1-631-938-8127

 45-1 Ramsey Road, Shirley, NY 11967, USA

**SDS-PAGE**



 Tel: 1-631-559-9269 1-516-512-3133

 Email: [info@creative-biomart.com](mailto:info@creative-biomart.com)  Fax: 1-631-938-8127

 45-1 Ramsey Road, Shirley, NY 11967, USA