

CD38 protein-coupled magnetic MicroBeads

Cat. No. CD38-406M **Lot. No.** (See product label)

SPECIFICATION

Species Human

Capacity for 1×10^9 total cells

Background

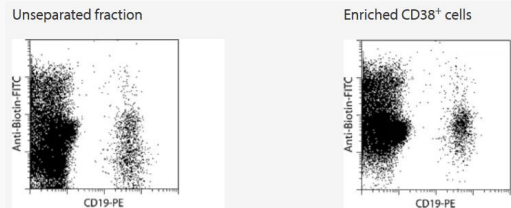
CD38 is a 45 kDa multi-lineage type II transmembrane glycoprotein. It is expressed at varying levels on the majority of hematopoietic as well as on some nonhematopoietic cells. The expression level depends on the developmental state and the activation status. CD38 is absent on most primitive CD34+ stem cells and upregulated on CD34+ cells upon lymphocyte commitment.

Application

The CD38 MicroBead Kit can be applied for positive selection or depletion of hematopoietic cell subsets expressing human CD38 antigen, such as CD38+ B cells, T cells, and NK cells from PBMCs, bone marrow, or tissue. The kit is also suitable for the isolation of CD38+ plasma cells from tissue, such as bone marrow.

The CD38 MicroBead Kit can also be used for depletion of CD38+ cells to isolate CD38- cell subsets, e.g., CD34+ CD38- stem cells in combination with the CD34 MicroBead Kit.

Analysis



 Tel: 1-631-559-9269 1-516-512-3133

 Email: info@creative-biomart.com  Fax: 1-631-938-8127

 45-1 Ramsey Road, Shirley, NY 11967, USA



Positive selection of CD38+ cells from PBMCs using the CD38 MicroBead Kit, an MS Column, and a MiniMACS Separator. CD38+ cells labeled with the CD38 MicroBead Kit were fluorescently stained with Anti-Biotin-FITC and CD19-PE.

 Tel: 1-631-559-9269 1-516-512-3133

 Email: info@creative-biomart.com  Fax: 1-631-938-8127

 45-1 Ramsey Road, Shirley, NY 11967, USA