

## Recombinant Human CD3D Protein, GST-Tagged

Cat. No. CD3D-0800H Lot. No. (See product label)

### SPECIFICATION

<b>Product Overview</b>	Human CD3D full-length ORF (NP_000723.1, 1 a.a. - 171 a.a.) recombinant protein with GST-tag at N-terminal.
<b>Species</b>	Human
<b>Source</b>	Wheat Germ
<b>Description</b>	The protein encoded by this gene is part of the T-cell receptor/CD3 complex (TCR/CD 3 complex) and is involved in T-cell development and signal transduction. The encoded membrane protein represents the delta subunit of the CD3 complex, and along with four other CD3 subunits, binds either TCR alpha/beta or TCR gamma/delta to form the TCR/CD3 complex on the surface of T-cells. Defects in this gene are a cause of severe combined immunodeficiency autosomal recessive T-cell-negative/B-cell-positive/NK-cell-positive (SCIDBNK). Two transcript variants encoding different isoforms have been found for this gene. Other variants may also exist, but the full-length natures of their transcripts has yet to be defined. [provided by RefSeq, Feb 2009]
<b>Molecular Mass</b>	45.3 kDa
<b>AA Sequence</b>	MEHSTFLSGLVLATLLSQVSPFKIPIEELEDVFNVCNTSITWVEGTVGTLTSDITRLD LGKRILDPGRIYRCNGTDIYKDKESTVQVHYRMCQSCVELDPATVAGIIVTDVIATLLL ALGVFCFAGHETGRLSGAADTQALLRNDQVYQPLRDRDDAQYSHLGGNWARNK
<b>Applications</b>	Enzyme-linked Immunoabsorbent Assay Western Blot (Recombinant protein)

 Tel: 1-631-559-9269 1-516-512-3133

 Email: [info@creative-biomart.com](mailto:info@creative-biomart.com)  Fax: 1-631-938-8127

 45-1 Ramsey Road, Shirley, NY 11967, USA

Antibody Production  
Protein Array

**Storage** Store at -80 centigrade. Aliquot to avoid repeated freezing and thawing.

**Storage Buffer** 50 mM Tris-HCl, 10 mM reduced Glutathione, pH=8.0 in the elution buffer.

## GENE INFORMATION

**Gene Name** CD3D CD3d molecule, delta (CD3-TCR complex) [ Homo sapiens ]

**Official Symbol** CD3D

**Synonyms** CD3D; CD3d molecule, delta (CD3-TCR complex); CD3d antigen, delta polypeptide (TiT3 complex), T3D; T-cell surface glycoprotein CD3 delta chain; CD3 delta; OKT3, delta chain; CD3 antigen, delta subunit; T-cell receptor T3 delta chain; CD3d antigen, delta polypeptide (TiT3 complex); T3D; CD3-DELTA;

**Gene ID** 915

**mRNA Refseq** NM\_000732

**Protein Refseq** NP\_000723

**MIM** 186790

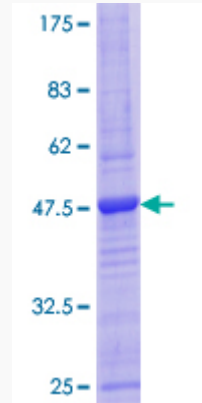
**UniProt ID** P04234

 Tel: 1-631-559-9269 1-516-512-3133

 Email: [info@creative-biomart.com](mailto:info@creative-biomart.com)  Fax: 1-631-938-8127

 45-1 Ramsey Road, Shirley, NY 11967, USA

**Quality Control  
Testing**



12.5% SDS-PAGE Stained with Coomassie Blue.

 Tel: 1-631-559-9269 1-516-512-3133

 Email: [info@creative-biomart.com](mailto:info@creative-biomart.com)  Fax: 1-631-938-8127

 45-1 Ramsey Road, Shirley, NY 11967, USA