

Recombinant Human CD3D protein, His-tagged

Cat. No. CD3D-2193H Lot. No. (See product label)

SPECIFICATION

Product Overview	Recombinant Human CD3D protein(NP_000723.1) (Met 1-Ala 105) with a C-terminal polyhistidine tag was expressed in HEK293.
Species	Human
Source	HEK293
ProteinLength	1-105 aa
Form	Lyophilized from sterile PBS, pH 7.4.
Molecular Mass	The secreted recombinant human CD3D comprises 95 amino acids with a predicted molecular mass of 11 kDa. As a result of glycosylation, rhCD3D migrates as an approximately 20-23 kDa band in SDS-PAGE under reducing conditions.
Endotoxin	< 1.0 EU per µg of the protein as determined by the LAL method.
Purity	> 92 % as determined by SDS-PAGE
Storage	Store it under sterile conditions at -20°C to -80°C upon receiving. Recommend to aliquot the protein into smaller quantities for optimal storage. Avoid repeated freeze-thaw cycles.
Reconstitution	It is recommended that sterile water be added to the vial to prepare a stock solution of 0.2 ug/ul. Centrifuge the vial at 4°C before opening to recover the entire contents.

 Tel: 1-631-559-9269 1-516-512-3133

 Email: info@creative-biomart.com  Fax: 1-631-938-8127

 45-1 Ramsey Road, Shirley, NY 11967, USA

protein Refseq-Weblink http://www.ncbi.nlm.nih.gov/protein/NP_000723.1

Unit ID P04234

Unit ID-Weblink <http://www.uniprot.org/uniprot/P04234>

GENE INFORMATION

Gene Name [CD3D CD3d molecule, delta \(CD3-TCR complex\) \[Homo sapiens \]](#)

Official Symbol [CD3D](#)

Synonyms CD3D; CD3d molecule, delta (CD3-TCR complex); CD3d antigen, delta polypeptide (TiT3 complex) , T3D; T-cell surface glycoprotein CD3 delta chain; CD3 delta; OKT3, delta chain; CD3 antigen, delta subunit; T-cell receptor T3 delta chain; CD3d antigen, delta polypeptide (TiT3 complex); T3D; CD3-DELTA;

Gene ID [915](#)

mRNA Refseq [NM_000732](#)

protein Refseq [NP_000723](#)

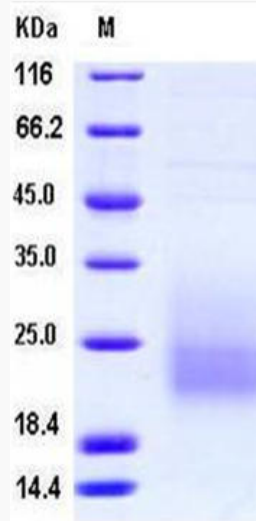
MIM [186790](#)

 Tel: 1-631-559-9269 1-516-512-3133

 Email: info@creative-biomart.com  Fax: 1-631-938-8127

 45-1 Ramsey Road, Shirley, NY 11967, USA

SDS-PAGE



 Tel: 1-631-559-9269 1-516-512-3133

 Email: info@creative-biomart.com  Fax: 1-631-938-8127

 45-1 Ramsey Road, Shirley, NY 11967, USA