

Active Recombinant Human CD3D Protein (Phe22-Ala105), C-Fc-tagged

Cat. No. CD3D-28H **Lot. No.** (See product label)

SPECIFICATION

Product Overview	Recombinant human CD3 delta/CD3d protein (Phe22-Ala105) with a Human IgG1 (Pro100-Lys330) Fc tag at C-terminus was expressed in Human embryonic kidney cell.
Species	Human
Source	HEK293
ProteinLength	Phe22-Ala105
Description	The protein encoded by this gene is part of the T-cell receptor/CD3 complex (TCR/CD 3 complex) and is involved in T-cell development and signal transduction. The encoded membrane protein represents the delta subunit of the CD3 complex, and along with four other CD3 subunits, binds either TCR alpha/beta or TCR gamma/delta to form the TCR/CD3 complex on the surface of T-cells. Defects in this gene are a cause of severe combined immunodeficiency autosomal recessive T-cell-negative/B-cell-positive/NK-cell-positive (SCIDBNK). Two transcript variants encoding different isoforms have been found for this gene. Other variants may also exist, but the full-length nature of their transcripts has yet to be defined.
Form	Disulfide linked homodimer
Bio-activity	Measured by its binding ability in a functional ELISA. When Recombinant Human CD3 delta/CD3d Fc Chimera is immobilized at 1.0

 Tel: 1-631-559-9269 1-516-512-3133

 Email: info@creative-biomart.com  Fax: 1-631-938-8127

 45-1 Ramsey Road, Shirley, NY 11967, USA

	<p>µg/mL, 100 µL/well, the concentration of Recombinant Human CD3E Fc Chimera Biotinylated Protein that produces 50% of the optimal binding response is approximately 1.0-6.0 µg/mL.</p>
Molecular Mass	<p>Predicted Molecular Mass: 36 kDa SDS-PAGE: 45-55 kDa, under reducing conditions</p>
Endotoxin	<p><0.10 EU/µg of the protein by the LAL method.</p>
Purity	<p>>95% by SDS-PAGE visualized with Silver Staining and quantitative densitometry by Coomassie® Blue Staining.</p>
Storage	<p>Use a manual defrost freezer and avoid repeated freeze-thaw cycles. 12 months from date of receipt, -20 to -70 centigrade as supplied. 1 month, 2 to 8 centigrade under sterile conditions after reconstitution. 3 months, -20 to -70 centigrade under sterile conditions after reconstitution.</p>
Storage Buffer	<p>Lyophilized from a 0.2 µm filtered solution in PBS.</p>
Reconstitution	<p>Reconstitute at 250 µg/mL in PBS.</p>
Shipping	<p>The product is shipped at ambient temperature.</p>

GENE INFORMATION

Gene Name	<p>CD3D CD3d molecule, delta (CD3-TCR complex) [Homo sapiens (human)]</p>
Official Symbol	<p>CD3D</p>
Synonyms	<p>CD3D; CD3d molecule, delta (CD3-TCR complex); CD3d antigen, delta polypeptide (TiT3 complex) , T3D; T-cell surface glycoprotein CD3 delta chain; CD3 delta; OKT3,</p>

 Tel: 1-631-559-9269 1-516-512-3133

 Email: info@creative-biomart.com  Fax: 1-631-938-8127

 45-1 Ramsey Road, Shirley, NY 11967, USA

delta chain; CD3 antigen, delta subunit; T-cell receptor T3 delta chain; CD3d antigen, delta polypeptide (TiT3 complex); T3D; CD3-DELTA

Gene ID 915

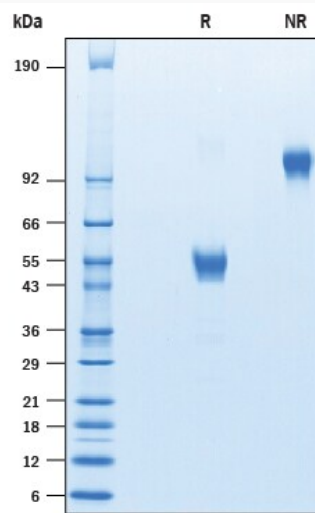
mRNA Refseq [NM_000732](#)

Protein Refseq [NP_000723](#)

MIM 186790

UniProt ID [P04234](#)

SDS-PAGE analysis of Prolactin-Inducible Protein native protein, 12% gel stained with Coomassie Brilliant Blue G250.



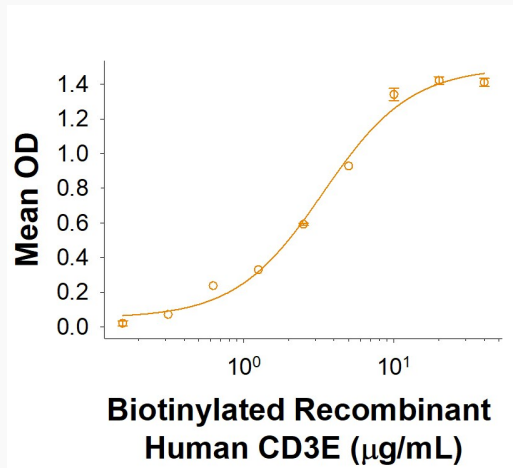
 Tel: 1-631-559-9269 1-516-512-3133

 Email: info@creative-biomart.com  Fax: 1-631-938-8127

 45-1 Ramsey Road, Shirley, NY 11967, USA



Bioactivity



Tel: 1-631-559-9269 1-516-512-3133

Email: info@creative-biomart.com Fax: 1-631-938-8127

45-1 Ramsey Road, Shirley, NY 11967, USA