

Recombinant Cynomolgus CD3E Protein, Asp22-Thr48, C-hFc-Avi tagged, Biotinylated

Cat. No. CD3E-004C **Lot. No.** (See product label)

SPECIFICATION

Product Overview	Recombinant Cynomolgus CD3E/CD3 epsilon 1-27 peptide-C-hFc-Avi protein was developed from HEK293 and has a target region of C-hFc-Avi.
Species	Cynomolgus
Source	HEK293
ProteinLength	Asp22-Thr48
Description	The protein encoded by this gene is the CD3-epsilon polypeptide, which together with CD3-gamma, -delta and -zeta, and the T-cell receptor alpha/beta and gamma/delta heterodimers, forms the T-cell receptor-CD3 complex. This complex plays an important role in coupling antigen recognition to several intracellular signal-transduction pathways. The genes encoding the epsilon, gamma and delta polypeptides are located in the same cluster on chromosome 11. The epsilon polypeptide plays an essential role in T-cell development. Defects in this gene cause immunodeficiency. This gene has also been linked to a susceptibility to type I diabetes in women.
Conjugation/Label	Biotin
Form	Lyophilised
Endotoxin	Endotoxin level was found to be less than 0.1 ng/μg (1 EU/μg).

 Tel: 1-631-559-9269 1-516-512-3133

 Email: info@creative-biomart.com  Fax: 1-631-938-8127

 45-1 Ramsey Road, Shirley, NY 11967, USA

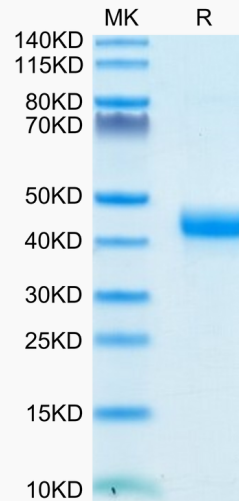
Notes	FOR RESEARCH USE ONLY (RUO).
Storage	The lyophilized protein is stable for at least 1 year from date of receipt at -20 centigrade.
Storage Buffer	Lyophilised from 0.2 µm filtered PBS solution pH 7.4. Upon receipt centrifuge vial to ensure maximal product extraction, recommended: 20 sec, 5K RPM
Conjugation	Biotin
GENE INFORMATION	
Gene Name	CD3E CD3e molecule, epsilon (CD3-TCR complex) [<i>Macaca mulatta</i> (Rhesus monkey)]
Official Symbol	CD3E
Synonyms	CD3E; CD3e molecule, epsilon (CD3-TCR complex); T-cell surface glycoprotein CD3 epsilon chain;
Gene ID	699467
mRNA Refseq	XM_015115816
Protein Refseq	XP_014971302
UniProt ID	G7NCB9

 Tel: 1-631-559-9269 1-516-512-3133

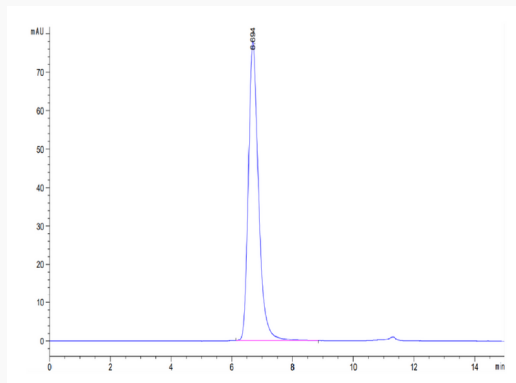
 Email: info@creative-biomart.com  Fax: 1-631-938-8127

 45-1 Ramsey Road, Shirley, NY 11967, USA

**Biotinylated
Cynomolgus CD3E 1-
27 peptide on Tris-
Bis PAGE under
reduced condition.
The purity is greater
than 95%.**



**The purity of
Biotinylated
Cynomolgus CD3E 1-
27 peptide is greater
than 95% as
determined by SEC-
HPLC.**



**Immobilized Anti-
CD3 Antibody, mFc
Tag at 1 µg/mL (100
µL/Well) on the plate.
Dose response curve
for Biotinylated
Cynomolgus CD3E 1-**

Tel: 1-631-559-9269 1-516-512-3133

Email: info@creative-biomart.com Fax: 1-631-938-8127

45-1 Ramsey Road, Shirley, NY 11967, USA



**27 peptide, hFc Tag
with the EC50 of 6
ng/mL determined by
ELISA.**

 Tel: 1-631-559-9269 1-516-512-3133

 Email: info@creative-biomart.com  Fax: 1-631-938-8127

 45-1 Ramsey Road, Shirley, NY 11967, USA