

Recombinant Human CD3E Protein, ECD, Tag Free, Biotinylated

Cat. No. CD3E-039H **Lot. No.** (See product label)

SPECIFICATION

Product Overview	Recombinant human CD3 Epsilon protein was developed from HEK293.
Species	Human
Source	HEK293
ProteinLength	ECD
Description	The protein encoded by this gene is the CD3-epsilon polypeptide, which together with CD3-gamma, -delta and -zeta, and the T-cell receptor alpha/beta and gamma/delta heterodimers, forms the T-cell receptor-CD3 complex. This complex plays an important role in coupling antigen recognition to several intracellular signal-transduction pathways. The genes encoding the epsilon, gamma and delta polypeptides are located in the same cluster on chromosome 11. The epsilon polypeptide plays an essential role in T-cell development. Defects in this gene cause immunodeficiency. This gene has also been linked to a susceptibility to type I diabetes in women.
Conjugation/Label	Biotin
Form	Lyophilised
Endotoxin	Endotoxin level was found to be less than 0.1 ng/μg (1 EU/μg).

 Tel: 1-631-559-9269 1-516-512-3133

 Email: info@creative-biomart.com  Fax: 1-631-938-8127

 45-1 Ramsey Road, Shirley, NY 11967, USA

Applications	ELISA, WB
Notes	FOR RESEARCH USE ONLY (RUO).
Storage	Recombinant CD3e can be stored in working aliquots at 2 to 8 centigrade for one month, or at -20 to -70 centigrade for 1 year. Avoid repeated freeze/thaw cycles.
Storage Buffer	Lyophilised from 0.2 µm filtered PBS solution, pH 7.2, 5% Trehalose.
Conjugation	Biotin

GENE INFORMATION

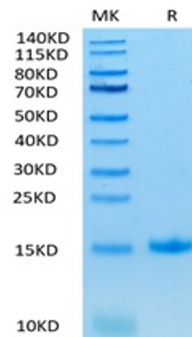
Gene Name	CD3E CD3e molecule, epsilon (CD3-TCR complex) [Homo sapiens (human)]
Official Symbol	CD3E
Synonyms	CD3E; CD3e molecule, epsilon (CD3-TCR complex); CD3e antigen, epsilon polypeptide (TiT3 complex); T-cell surface glycoprotein CD3 epsilon chain; CD3-epsilon; T-cell surface antigen T3/Leu-4 epsilon chain; T-cell antigen receptor complex, epsilon subunit of T3; T3E; TCRE; FLJ18683;
Gene ID	916
mRNA Refseq	NM_000733
Protein Refseq	NP_000724
MIM	186830
UniProt ID	P07766

 Tel: 1-631-559-9269 1-516-512-3133

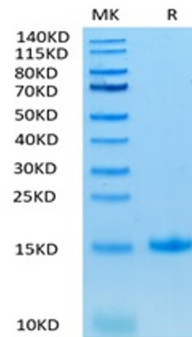
 Email: info@creative-biomart.com  Fax: 1-631-938-8127

 45-1 Ramsey Road, Shirley, NY 11967, USA

1 µg loaded Tris-Bis PAGE under reducing condition. The purity is greater than 95%.



Biotinylated Human IL-18 on Tris-Bis PAGE under reduced condition. The purity is greater than 95%.



Immobilized Biotinylated Human TGF Beta1 at 1 µg/mL (100 µL/Well). Response curve for TGFR2 with a linear range of 2-100 ng/mL was determined by ELISA

Immobilized Human

 Tel: 1-631-559-9269 1-516-512-3133

 Email: info@creative-biomart.com  Fax: 1-631-938-8127

 45-1 Ramsey Road, Shirley, NY 11967, USA



IL-18BP, hFc Tag at 5
µg/mL (100 µL/Well)
on the plate. Dose
response curve for
Biotinylated Human
IL-18, No Tag with
the EC50 of 26.0
ng/mL determined by
ELISA.

 Tel: 1-631-559-9269 1-516-512-3133

 Email: info@creative-biomart.com  Fax: 1-631-938-8127

 45-1 Ramsey Road, Shirley, NY 11967, USA