

## CD3E protein-coupled magnetic MicroBeads

Cat. No. CD3E-039M    Lot. No. (See product label)

### SPECIFICATION

**Species**                      Mouse

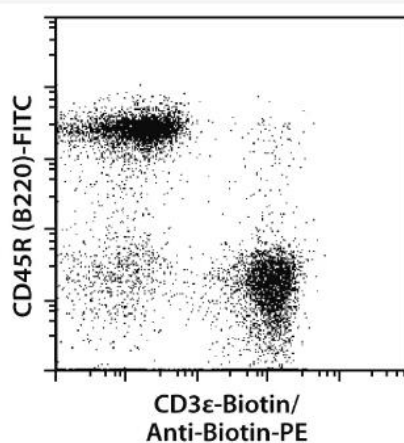
**Capacity**                    for  $1 \times 10^9$  total cells

**Background**

CD3 $\epsilon$  is a 20 kDa transmembrane protein and subunit of the TCR complex. Along with the  $\gamma$  and  $\delta$  subunits of CD3, the  $\epsilon$  chain is required for assembly and surface expression of the TCR complex. CD3 is expressed on thymocytes, mature T lymphocytes, and natural killer T (NKT) cells. With the CD3 $\epsilon$  MicroBead Kit, mouse T lymphocytes and NKT cells can be depleted from various tissues including spleen, thymus, or lymph nodes.

**Analysis**

PBMCs before separation



A single-cell suspension from mouse spleen was prepared using the gentleMACS

 Tel: 1-631-559-9269    1-516-512-3133

 Email: [info@creative-biomart.com](mailto:info@creative-biomart.com)     Fax: 1-631-938-8127

 45-1 Ramsey Road, Shirley, NY 11967, USA



Dissociator. CD3ε cells were depleted from this suspension using the CD3ε MicroBead Kit, an LD Column, and a MidiMACS Separator. Cells were fluorescently stained with CD45R (B220)-FITC and Anti-Biotin-PE, and analyzed using the MACSQuant Analyzer.

 Tel: 1-631-559-9269 1-516-512-3133

 Email: [info@creative-biomart.com](mailto:info@creative-biomart.com)  Fax: 1-631-938-8127

 45-1 Ramsey Road, Shirley, NY 11967, USA