

Recombinant Human CD3E and CD3D Protein, Asp23-Glu120 and Phe22-Ala105, C-His tagged, Biotinylated

Cat. No. CD3E-045H Lot. No. (See product label)

SPECIFICATION

Product Overview	Recombinant human CD3E and CD3D/CD3 epsilon and CD3 delta-C-His protein was developed from HEK293 and has a target region of C-His.
Species	Human
Source	HEK293
ProteinLength	Asp23-Glu120 (CD3E) and Phe22-Ala105 (CD3D)
Description	The protein encoded by this gene is the CD3-epsilon polypeptide, which together with CD3-gamma, -delta and -zeta, and the T-cell receptor alpha/beta and gamma/delta heterodimers, forms the T-cell receptor-CD3 complex. This complex plays an important role in coupling antigen recognition to several intracellular signal-transduction pathways. The genes encoding the epsilon, gamma and delta polypeptides are located in the same cluster on chromosome 11. The epsilon polypeptide plays an essential role in T-cell development. Defects in this gene cause immunodeficiency. This gene has also been linked to a susceptibility to type I diabetes in women.
Conjugation/Label	Biotin
Form	Lyophilised
Endotoxin	Endotoxin level was found to be less than 0.1 ng/μg (1 EU/μg).

 Tel: 1-631-559-9269 1-516-512-3133

 Email: info@creative-biomart.com  Fax: 1-631-938-8127

 45-1 Ramsey Road, Shirley, NY 11967, USA

Notes	FOR RESEARCH USE ONLY (RUO).
Storage	The lyophilized protein is stable for at least 1 year from date of receipt at -20 centigrade.
Storage Buffer	Lyophilised from 0.2 µm filtered PBS solution pH 7.4. Upon receipt centrifuge vial to ensure maximal product extraction, recommended: 20 sec, 5K RPM
Conjugation	Biotin

GENE INFORMATION

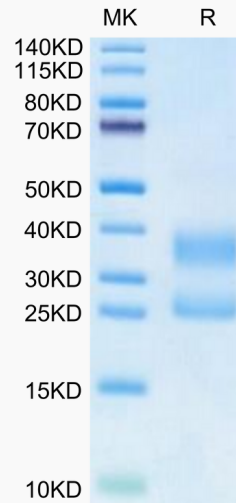
Gene Name	CD3E CD3e molecule, epsilon (CD3-TCR complex) [Homo sapiens (human)]
Official Symbol	CD3E
Synonyms	CD3E; CD3e molecule, epsilon (CD3-TCR complex); CD3e antigen, epsilon polypeptide (TiT3 complex); T-cell surface glycoprotein CD3 epsilon chain; CD3-epsilon; T-cell surface antigen T3/Leu-4 epsilon chain; T-cell antigen receptor complex, epsilon subunit of T3; T3E; TCRE; FLJ18683;
Gene ID	916
mRNA Refseq	NM_000733
Protein Refseq	NP_000724
MIM	186830
UniProt ID	P07766

 Tel: 1-631-559-9269 1-516-512-3133

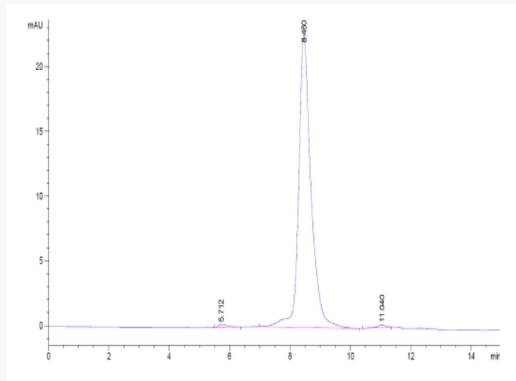
 Email: info@creative-biomart.com  Fax: 1-631-938-8127

 45-1 Ramsey Road, Shirley, NY 11967, USA

Biotinylated Human CD3E and CD3D on Tris-Bis PAGE under reduced condition. The purity is greater than 95%.




The purity of Biotinylated Human CD3E and CD3D is greater than 95% as determined by SEC-HPLC.



Immobilized Anti-CD3 Antibody, mFc Tag at 5 µg/mL (100 µL/Well) on the plate. Dose response curve for Biotinylated Human CD3E and

 Tel: 1-631-559-9269 1-516-512-3133

 Email: info@creative-biomart.com  Fax: 1-631-938-8127

 45-1 Ramsey Road, Shirley, NY 11967, USA



CD3D, His Tag with
the EC50 of 0.14
µg/mL determined by
ELISA.

 Tel: 1-631-559-9269 1-516-512-3133

 Email: info@creative-biomart.com  Fax: 1-631-938-8127

 45-1 Ramsey Road, Shirley, NY 11967, USA