

Recombinant Human CD3E Protein, GST-Tagged

Cat. No. CD3E-0803H Lot. No. (See product label)

SPECIFICATION

Product Overview	Human CD3E full-length ORF (AAH49847.1, 23 a.a. - 207 a.a.) recombinant protein with GST-tag at N-terminal.
Species	Human
Source	Wheat Germ
Description	The protein encoded by this gene is the CD3-epsilon polypeptide, which together with CD3-gamma, -delta and -zeta, and the T-cell receptor alpha/beta and gamma/delta heterodimers, forms the T-cell receptor-CD3 complex. This complex plays an important role in coupling antigen recognition to several intracellular signal-transduction pathways. The genes encoding the epsilon, gamma and delta polypeptides are located in the same cluster on chromosome 11. The epsilon polypeptide plays an essential role in T-cell development. Defects in this gene cause immunodeficiency. This gene has also been linked to a susceptibility to type I diabetes in women. [provided by RefSeq, Jul 2008]
Molecular Mass	46.09 kDa
AA Sequence	DGNEEMGGITQTPYKVSISGTTVILTCPQYPGSEILWQRNDKNIGGDEDDKNIGSDE DHLSLKEFSELEQSGYYVCYPRGSKPEDANFYLYLRARVCENCMEMDVM SVATIVIV DICITGGLLLL VYYWSKNRKAKAKPVTRGAGAGGRQRGQNKERPPPVPNPDYEPIR KGQRDLYSGLNQRRRI
Applications	Enzyme-linked Immunoabsorbent Assay

 Tel: 1-631-559-9269 1-516-512-3133

 Email: info@creative-biomart.com  Fax: 1-631-938-8127

 45-1 Ramsey Road, Shirley, NY 11967, USA

Western Blot (Recombinant protein)
 Antibody Production
 Protein Array

Storage Store at -80 centigrade. Aliquot to avoid repeated freezing and thawing.

Storage Buffer 50 mM Tris-HCl, 10 mM reduced Glutathione, pH=8.0 in the elution buffer.

GENE INFORMATION

Gene Name CD3E CD3e molecule, epsilon (CD3-TCR complex) [Homo sapiens]

Official Symbol CD3E

Synonyms CD3E; CD3e molecule, epsilon (CD3-TCR complex); CD3e antigen, epsilon polypeptide (TiT3 complex); T-cell surface glycoprotein CD3 epsilon chain; CD3-epsilon; T-cell surface antigen T3/Leu-4 epsilon chain; T-cell antigen receptor complex, epsilon subunit of T3; T3E; TCRE; FLJ18683;

Gene ID 916

mRNA Refseq NM_000733

Protein Refseq NP_000724

MIM 186830

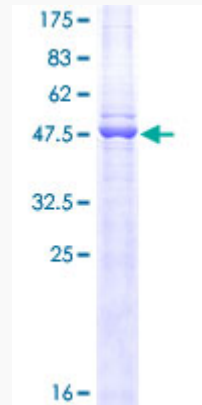
UniProt ID P07766

 Tel: 1-631-559-9269 1-516-512-3133

 Email: info@creative-biomart.com  Fax: 1-631-938-8127

 45-1 Ramsey Road, Shirley, NY 11967, USA

**Quality Control
Testing**



12.5% SDS-PAGE Stained with Coomassie Blue.

 Tel: 1-631-559-9269 1-516-512-3133

 Email: info@creative-biomart.com  Fax: 1-631-938-8127

 45-1 Ramsey Road, Shirley, NY 11967, USA