

## Recombinant Cynomolgus CD3E protein, His/Fc-tagged

**Cat. No.** CD3E-199C    **Lot. No.** (See product label)

### SPECIFICATION

<b>Product Overview</b>	Recombinant Cynomolgus CD3E (Gln22-Asp117) protein was fused to human IgG1 Fc/His-tag at C-terminus and expressed in human 293 cells (HEK293).
<b>Species</b>	Cynomolgus
<b>Source</b>	HEK293
<b>ProteinLength</b>	Gln22-Asp117
<b>Description</b>	<p>CD3e molecule, epsilon is also known as CD3E, is a T-cell surface single-pass type I membrane glycoprotein. CD3E contains 1 Ig-like (immunoglobulin-like) domain and 1 ITAM domain. CD3E, together with CD3-gamma, CD3-delta and CD3-zeta, and the T-cell receptor alpha/beta and gamma/delta heterodimers, forms the T cell receptor-CD3 complex. This complex plays an important role in coupling antigen recognition to several intracellular signal-transduction pathways. The genes encoding the epsilon, gamma and delta polypeptides are located in the same cluster on chromosome 11. The epsilon polypeptide plays an essential role in T-cell development. CD3E plays an essential role in T-cell development, and defects in CD3E gene cause severe immunodeficiency. CD3E gene has also been linked to a susceptibility to type I diabetes in women. CD3E has been shown to interact with TOP2B, CD3EAP and NCK2.</p>
<b>Predicted N Terminal</b>	Gln22
<b>Form</b>	Lyophilized from 0.22

 Tel: 1-631-559-9269    1-516-512-3133

 Email: [info@creative-biomart.com](mailto:info@creative-biomart.com)     Fax: 1-631-938-8127

 45-1 Ramsey Road, Shirley, NY 11967, USA

	µm filtered solution in Tris with Glycine, Arginine and NaCl, pH7.5, 10% trehalose.
<b>Molecular Mass</b>	The protein has a calculated MW of 38.3 kDa. The protein migrates as 43-50 kDa under reducing (R) condition (SDS-PAGE) due to glycosylation.
<b>Endotoxin</b>	Less than 1.0 EU per µg by the LAL method.
<b>Purity</b>	>95% as determined by SDS-PAGE.
<b>Storage</b>	<p>For long term storage, the product should be stored at lyophilized state at -20 centigrade or lower.</p> <p>Please avoid repeated freeze-thaw cycles.</p> <p>This product is stable after storage at:</p> <p>-20 to -70 centigrade for 12 months in lyophilized state;</p> <p>-70 centigrade for 3 months under sterile conditions after reconstitution.</p>
<b>Reconstitution</b>	It is recommended that sterile water be added to the vial to prepare a stock solution of 0.2 ug/ul. Centrifuge the vial at 4°C before opening to recover the entire contents.
<b>GENE INFORMATION</b>	
<b>Gene Name</b>	CD3E
<b>Official Symbol</b>	CD3E
<b>Synonyms</b>	CD3E; CD3e molecule, epsilon (CD3-TCR complex); CD3e antigen, epsilon polypeptide (TiT3 complex); T-cell surface glycoprotein CD3 epsilon chain; CD3-epsilon; T-cell surface antigen T3/Leu-4 epsilon chain; T-cell antigen receptor complex, epsilon subunit of T3; T3E; TCRE; FLJ18683
<b>Gene ID</b>	102133065

 Tel: 1-631-559-9269 1-516-512-3133

 Email: [info@creative-biomart.com](mailto:info@creative-biomart.com)  Fax: 1-631-938-8127

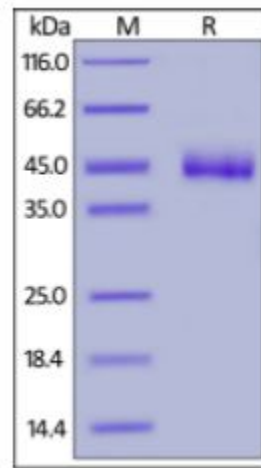
 45-1 Ramsey Road, Shirley, NY 11967, USA

mRNA Refseq [NM\\_001283615.1](#)

Protein Refseq [NP\\_001270544.1](#)

UniProt ID [Q95LI5](#)

**SDS-PAGE of CD3E-199C**



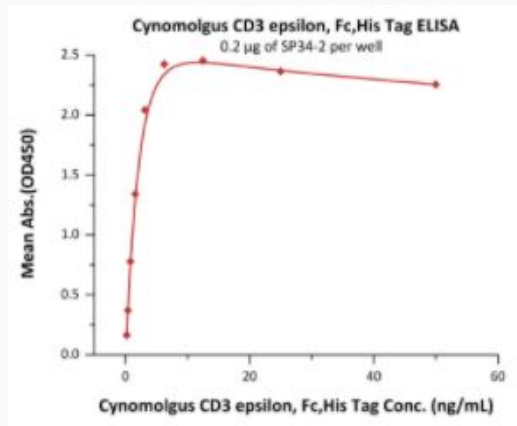
Cynomolgus CD3 epsilon, Fc,His Tag on SDS-PAGE under reducing (R) condition.  
The gel was stained overnight with Coomassie Blue. The purity of the protein is greater than 95%.

 Tel: 1-631-559-9269 1-516-512-3133

 Email: [info@creative-biomart.com](mailto:info@creative-biomart.com)  Fax: 1-631-938-8127

 45-1 Ramsey Road, Shirley, NY 11967, USA

**Bioactivity-ELISA of  
CD3E-199C**



Immobilized SP34-2 at 2 µg/mL (100 µL/well) can bind Cynomolgus CD3 epsilon, Fc,His Tag with a linear range of 0.2-3 ng/mL (Routinely tested).

 Tel: 1-631-559-9269 1-516-512-3133

 Email: [info@creative-biomart.com](mailto:info@creative-biomart.com)  Fax: 1-631-938-8127

 45-1 Ramsey Road, Shirley, NY 11967, USA