

Recombinant Human CD3E protein, hFc-Avi-tagged

Cat. No. CD3E-5895H Lot. No. (See product label)

SPECIFICATION

| | |
|-------------------------|---|
| Product Overview | Recombinant Human CD3E protein(P07766)(Asp23-Thr48), fused with C-terminal hFc-Avi tag, was expressed in HEK293. |
| Species | Human |
| Source | HEK293 |
| ProteinLength | Asp23-Thr48 |
| Tag | C-hFc-Avi |
| Form | Lyophilized from 0.22µm filtered solution in PBS (pH 7.4). Normally 8% trehalose is added as protectant before lyophilization. |
| Bio-activity | Immobilized Human CD3E 1-27, hFc Tag at 1µg/ml (100µl/Well) on the plate. Dose response curve for Biotinylated Anti-CD3 Antibody, hFc Tag with the EC50 of 14.7ng/ml determined by ELISA. |
| Molecular Mass | The protein has a predicted MW of 31.3 kDa. Due to glycosylation, the protein migrates to 40-50 kDa based on Tris-Bis PAGE result. |
| Endotoxin | Less than 1EU per µg by the LAL method. |
| Purity | > 95% as determined by Tris-Bis PAGE; > 95% as determined by HPLC |

 Tel: 1-631-559-9269 1-516-512-3133

 Email: info@creative-biomart.com  Fax: 1-631-938-8127

 45-1 Ramsey Road, Shirley, NY 11967, USA

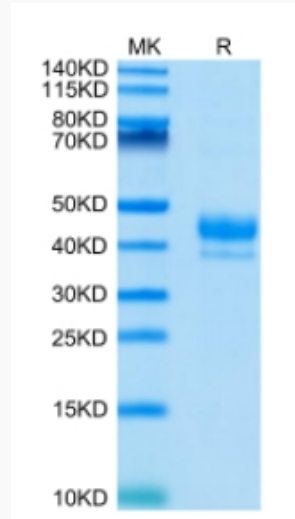
| | |
|-------------------------|---|
| Storage | Reconstituted protein stable at -80°C for 12 months, 4°C for 1 week. Use a manual defrost freezer and avoid repeated freeze-thaw cycles. |
| Reconstitution | Centrifuge tubes before opening. Reconstituting to a concentration more than 100 µg/ml is recommended. Dissolve the lyophilized protein in distilled water. |
| GENE INFORMATION | |
| Gene Name | CD3E CD3e molecule, epsilon (CD3-TCR complex) [Homo sapiens] |
| Official Symbol | CD3E |
| Synonyms | CD3E; CD3e molecule, epsilon (CD3-TCR complex); CD3e antigen, epsilon polypeptide (TiT3 complex); T-cell surface glycoprotein CD3 epsilon chain; CD3-epsilon; T-cell surface antigen T3/Leu-4 epsilon chain; T-cell antigen receptor complex, epsilon subunit of T3; T3E; TCRE; FLJ18683; |
| Gene ID | 916 |
| mRNA Refseq | NM_000733 |
| Protein Refseq | NP_000724 |
| UniProt ID | P07766 |

 Tel: 1-631-559-9269 1-516-512-3133

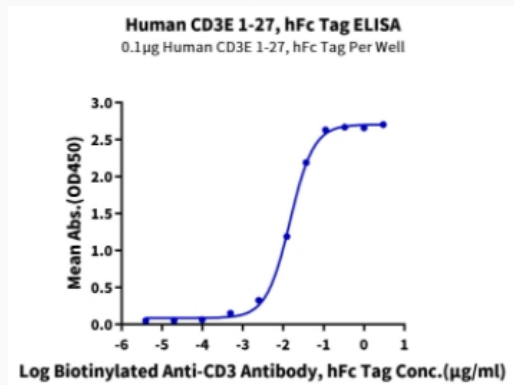
 Email: info@creative-biomart.com  Fax: 1-631-938-8127

 45-1 Ramsey Road, Shirley, NY 11967, USA

Tris-Bis PAGE



ELISA Data



 Tel: 1-631-559-9269 1-516-512-3133

 Email: info@creative-biomart.com  Fax: 1-631-938-8127

 45-1 Ramsey Road, Shirley, NY 11967, USA