

## Active Recombinant Human CD3E protein, His&hFc-tagged

Cat. No. CD3E-8111H Lot. No. (See product label)

### SPECIFICATION

<b>Product Overview</b>	Active Recombinant Human CD3E protein(P07766)(23-126 aa), fused with N-terminal His tag and C-terminal hFc tag, was expressed in HEK293.
<b>Species</b>	Human
<b>Source</b>	HEK293
<b>ProteinLength</b>	23-126 aa
<b>Form</b>	PBS, pH7.4, containing 0.01% SKL, 1mM DTT, 5% Trehalose and Proclin300.
<b>Bio-activity</b>	<p>CD3 epsilon (T-Cell Surface Glycoprotein CD3 Epsilon) is a 104-kD glycoprotein of the immunoglobulin (Ig) superfamily expressed in lymph node (RPKM 92.6), appendix (RPKM 45.9) and 9 other tissues. CD3 epsilon plays essential role in adaptive immune response. Mutations in CD3 epsilon lead to SCID (severe combined immunodeficiency). CD3E and CD247 can form two heterodimers flanking either side of the TCR. Thus a functional ELISA assay was conducted to detect the interaction of recombinant human CD3e and recombinant human CD247. Briefly, CD3e was diluted serially in PBS with 0.01% BSA (pH 7.4). Duplicate samples of 100 µl were then transferred to CD247-coated microtiter wells and incubated for 1h at 37°C. Wells were washed with PBST and incubated for 1h with anti-CD3e pAb, then aspirated and washed 3 times. After incubation with HRP labelled secondary antibody for 1h at 37°C, wells were aspirated and washed 5 times. With the addition of substrate solution, wells were incubated 15-25 minutes at 37°C. Finally, add 50 µ stop solution</p>

 Tel: 1-631-559-9269 1-516-512-3133

 Email: [info@creative-biomart.com](mailto:info@creative-biomart.com)  Fax: 1-631-938-8127

 45-1 Ramsey Road, Shirley, NY 11967, USA

to the wells and read at 450/630 nm immediately. The binding activity of recombinant human CD3e and recombinant human CD247 was shown, the EC50 for this effect is 0.68 ug/mL.

**Molecular Mass** 42.8kDa

**Endotoxin** <1.0EU per 1µg (determined by the LAL method).

**Purity** > 95%

**Storage** Avoid repeated freeze/thaw cycles. Store at 2-8°C for one month. Store at -20°C for 12 months. Aliquot and store at -80°C for 12 months.

**Reconstitution** Reconstitute in 10mM PBS (pH7.4) to a concentration of 0.1-1.0 mg/mL. Do not vortex.

## GENE INFORMATION

**Gene Name** CD3E CD3e molecule, epsilon (CD3-TCR complex) [ Homo sapiens ]

**Official Symbol** CD3E

**Synonyms** CD3E; CD3e molecule, epsilon (CD3-TCR complex); CD3e antigen, epsilon polypeptide (TiT3 complex); T-cell surface glycoprotein CD3 epsilon chain; CD3-epsilon; T-cell surface antigen T3/Leu-4 epsilon chain; T-cell antigen receptor complex, epsilon subunit of T3; T3E; TCRE; FLJ18683;

**Gene ID** 916

**mRNA Refseq** NM\_000733

 Tel: 1-631-559-9269 1-516-512-3133

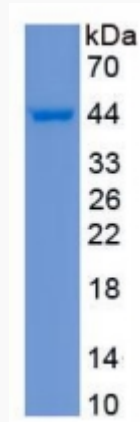
 Email: [info@creative-biomart.com](mailto:info@creative-biomart.com)  Fax: 1-631-938-8127

 45-1 Ramsey Road, Shirley, NY 11967, USA

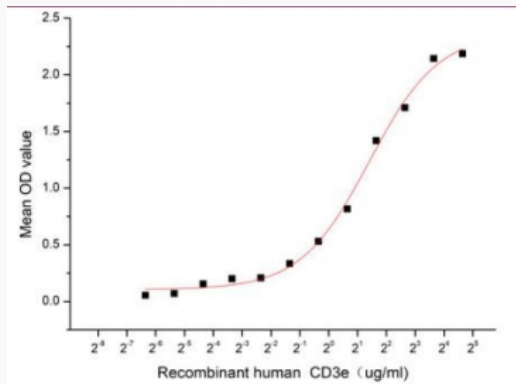
Protein Refseq NP\_000724

UniProt ID P07766

SDS-PAGE



Activity



Tel: 1-631-559-9269 1-516-512-3133

Email: [info@creative-biomart.com](mailto:info@creative-biomart.com) Fax: 1-631-938-8127

45-1 Ramsey Road, Shirley, NY 11967, USA