

## Recombinant Human CD3G Protein, GST-Tagged

Cat. No. CD3G-0805H Lot. No. (See product label)

### SPECIFICATION

<b>Product Overview</b>	Human CD3G partial ORF (NP_000064, 23 a.a. - 111 a.a.) recombinant protein with GST-tag at N-terminal.
<b>Species</b>	Human
<b>Source</b>	Wheat Germ
<b>Description</b>	The protein encoded by this gene is the CD3-gamma polypeptide, which together with CD3-epsilon, -delta and -zeta, and the T-cell receptor alpha/beta and gamma/delta heterodimers, forms the T-cell receptor-CD3 complex. This complex plays an important role in coupling antigen recognition to several intracellular signal-transduction pathways. The genes encoding the epsilon, gamma and delta polypeptides are located in the same cluster on chromosome 11. Defects in this gene are associated with T cell immunodeficiency. [provided by RefSeq, Jul 2008]
<b>Molecular Mass</b>	35.53 kDa
<b>AA Sequence</b>	QSIKGNHLVKVYDYQEDGSVLLTCDAEAKNITWFKDGKMIGFLTEDKKKWNLGSNA KDPRGMYQCKGSQNKSKPLQVYYRMCQNCIELN
<b>Applications</b>	Enzyme-linked Immunoabsorbent Assay Western Blot (Recombinant protein) Antibody Production Protein Array

 Tel: 1-631-559-9269 1-516-512-3133

 Email: [info@creative-biomart.com](mailto:info@creative-biomart.com)  Fax: 1-631-938-8127

 45-1 Ramsey Road, Shirley, NY 11967, USA

**Storage** Store at -80 centigrade. Aliquot to avoid repeated freezing and thawing.

**Storage Buffer** 50 mM Tris-HCl, 10 mM reduced Glutathione, pH=8.0 in the elution buffer.

## GENE INFORMATION

**Gene Name** CD3G CD3g molecule, gamma (CD3-TCR complex) [ Homo sapiens ]

**Official Symbol** CD3G

**Synonyms** CD3G; CD3g molecule, gamma (CD3-TCR complex); CD3g antigen, gamma polypeptide (TiT3 complex); T-cell surface glycoprotein CD3 gamma chain; T-cell receptor T3 gamma chain; CD3g molecule, epsilon (CD3-TCR complex); T-cell antigen receptor complex, gamma subunit of T3; T3G; CD3-GAMMA; FLJ17620; FLJ17664; FLJ79544; FLJ94613; MGC138597;

**Gene ID** 917

**mRNA Refseq** NM\_000073

**Protein Refseq** NP\_000064

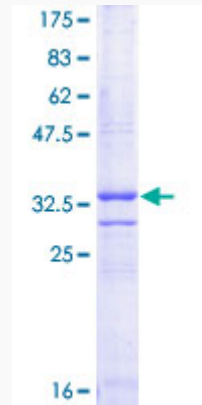
**UniProt ID** P09693

 Tel: 1-631-559-9269 1-516-512-3133

 Email: [info@creative-biomart.com](mailto:info@creative-biomart.com)  Fax: 1-631-938-8127

 45-1 Ramsey Road, Shirley, NY 11967, USA

**Quality Control  
Testing**



12.5% SDS-PAGE Stained with Coomassie Blue.

 Tel: 1-631-559-9269 1-516-512-3133

 Email: [info@creative-biomart.com](mailto:info@creative-biomart.com)  Fax: 1-631-938-8127

 45-1 Ramsey Road, Shirley, NY 11967, USA