

## Recombinant Human CD3G protein, His&Myc-tagged

Cat. No. CD3G-4533H Lot. No. (See product label)

### SPECIFICATION

<b>Product Overview</b>	Recombinant Human CD3G protein(P09693)(23-116aa), fused with N-terminal His tag and C-terminal Myc tag, was expressed in E.coli.
<b>Species</b>	Human
<b>Source</b>	E.coli
<b>ProteinLength</b>	23-116aa
<b>Form</b>	If the delivery form is liquid, the default storage buffer is Tris/PBS-based buffer, 5%-50% glycerol. If the delivery form is lyophilized powder, the buffer before lyophilization is Tris/PBS-based buffer, 6% Trehalose, pH 8.0.
<b>Molecular Mass</b>	18.2 kDa
<b>Purity</b>	Greater than 90% as determined by SDS-PAGE.
<b>Storage</b>	Store at -20°C/-80°C upon receipt, aliquoting is necessary for mutiple use. Avoid repeated freeze-thaw cycles.
<b>Reconstitution</b>	We recommend that this vial be briefly centrifuged prior to opening to bring the contents to the bottom. Please reconstitute protein in deionized sterile water to a concentration of 0.1-1.0 mg/mL. We recommend to add 5-50% of glycerol (final concentration) and aliquot for long-term storage at -20°C/-80°C.

 Tel: 1-631-559-9269 1-516-512-3133

 Email: [info@creative-biomart.com](mailto:info@creative-biomart.com)  Fax: 1-631-938-8127

 45-1 Ramsey Road, Shirley, NY 11967, USA

**AA Sequence** QSIKGNHLVKVYDYQEDGSVLLTCDAEAKNITWFKDGMIGFLTEDKKKWNLGSNA  
KDPRGMYQCKGSQNKSKPLQVYYRMCQNCIELNAATIS

## GENE INFORMATION

**Gene Name** CD3G CD3g molecule, gamma (CD3-TCR complex) [ Homo sapiens ]

**Official Symbol** CD3G

**Synonyms** CD3G; CD3g molecule, gamma (CD3-TCR complex); CD3g antigen, gamma polypeptide (TiT3 complex); T-cell surface glycoprotein CD3 gamma chain; T-cell receptor T3 gamma chain; CD3g molecule, epsilon (CD3-TCR complex); T-cell antigen receptor complex, gamma subunit of T3; T3G; CD3-GAMMA; FLJ17620; FLJ17664; FLJ79544; FLJ94613; MGC138597;

**Gene ID** 917

**mRNA Refseq** NM\_000073

**Protein Refseq** NP\_000064

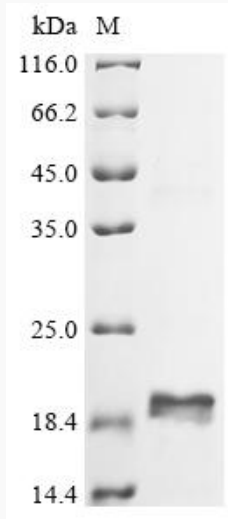
**UniProt ID** P09693

 Tel: 1-631-559-9269 1-516-512-3133

 Email: [info@creative-biomart.com](mailto:info@creative-biomart.com)  Fax: 1-631-938-8127

 45-1 Ramsey Road, Shirley, NY 11967, USA

**SDS-PAGE**



 Tel: 1-631-559-9269 1-516-512-3133

 Email: [info@creative-biomart.com](mailto:info@creative-biomart.com)  Fax: 1-631-938-8127

 45-1 Ramsey Road, Shirley, NY 11967, USA