

## Recombinant Human CD3G Protein (Met1-Ser116), C-His tagged

Cat. No. CD3G-5286H Lot. No. (See product label)

### SPECIFICATION

<b>Product Overview</b>	Recombinant human CD3G (Met1-Ser116) fused with the C-terminal His tag was expressed in Mammalian cells.
<b>Species</b>	Human
<b>Source</b>	Mammalian Cells
<b>ProteinLength</b>	Met1-Ser116
<b>Form</b>	Lyophilized powder/frozen liquid
<b>Molecular Mass</b>	12.87 kDa
<b>Endotoxin</b>	< 1.0 EU/μg of the protein as determined by the LAL method.
<b>Purity</b>	>90% as determined by SDS-PAGE.
<b>Notes</b>	For research use only.
<b>Storage</b>	Use a manual defrost freezer and avoid repeated freeze thaw cycles. Store at 2 to 8 centigrade for one week. Store at -20 to -80 centigrade for twelve months from the date of receipt.
<b>Storage Buffer</b>	Supplied as solution form in PBS, pH 7.5 or lyophilized from PBS, pH 7.5.

 Tel: 1-631-559-9269 1-516-512-3133

 Email: [info@creative-biomart.com](mailto:info@creative-biomart.com)  Fax: 1-631-938-8127

 45-1 Ramsey Road, Shirley, NY 11967, USA

**Reconstitution** Reconstitute in sterile water for a stock solution.

**Shipping** They are shipped out with dry ice/blue ice unless customers require otherwise.

## GENE INFORMATION

**Gene Name** CD3G CD3g molecule, gamma (CD3-TCR complex) [ Homo sapiens (human) ]

**Official Symbol** CD3G

**Synonyms** CD3G; CD3g molecule, gamma (CD3-TCR complex); CD3g antigen, gamma polypeptide (TiT3 complex); T-cell surface glycoprotein CD3 gamma chain; T-cell receptor T3 gamma chain; CD3g molecule, epsilon (CD3-TCR complex); T-cell antigen receptor complex, gamma subunit of T3; T3G; CD3-GAMMA; FLJ17620; FLJ17664; FLJ79544; FLJ94613; MGC138597;

**Gene ID** 917

**mRNA Refseq** NM\_000073

**Protein Refseq** NP\_000064

**MIM** 186740

**UniProt ID** P09693

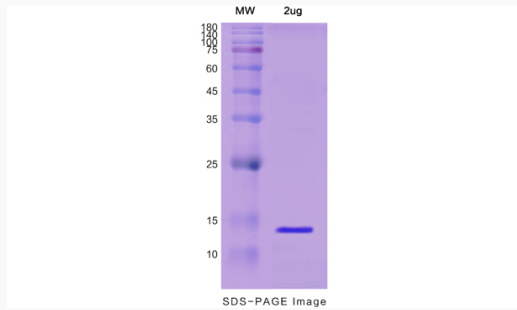
 Tel: 1-631-559-9269 1-516-512-3133

 Email: [info@creative-biomart.com](mailto:info@creative-biomart.com)  Fax: 1-631-938-8127

 45-1 Ramsey Road, Shirley, NY 11967, USA



SDS-PAGE



Tel: 1-631-559-9269 1-516-512-3133

Email: [info@creative-biomart.com](mailto:info@creative-biomart.com) Fax: 1-631-938-8127

45-1 Ramsey Road, Shirley, NY 11967, USA