

Recombinant Human CD4 protein, hFc-tagged

Cat. No. CD4-052H Lot. No. (See product label)

SPECIFICATION

Product Overview	Recombinant Human CD4 protein(P01730)(Lys26-Trp390), fused with C-terminal hFc tag, was expressed in HEK293.
Species	Human
Source	HEK293
ProteinLength	Lys26-Trp390
Tag	C-hFc
Form	Lyophilized from 0.22µm filtered solution in PBS, 100mM L-Arginine (pH 7.4). Normally 5% trehalose is added as protectant before lyophilization.
Bio-activity	Immobilized Human CD4 at 0.5µg/ml (100µl/Well) on the plate. Dose response curve for Biotinylated Anti-CD4 Antibody, hFc Tag with the EC50 of 24.8ng/ml determined by ELISA.
Molecular Mass	The protein has a predicted MW of 67.5 kDa. Due to glycosylation, the protein migrates to 70-80 kDa based on Tris-Bis PAGE result.
Endotoxin	Less than 1EU per µg by the LAL method.
Purity	> 95% as determined by Tris-Bis PAGE; > 95% as determined by HPLC

 Tel: 1-631-559-9269 1-516-512-3133

 Email: info@creative-biomart.com  Fax: 1-631-938-8127

 45-1 Ramsey Road, Shirley, NY 11967, USA

Storage Reconstituted protein stable at -80°C for 12 months, 4°C for 1 week. Use a manual defrost freezer and avoid repeated freeze-thaw cycles.

Reconstitution Centrifuge tubes before opening. Reconstituting to a concentration more than 100 µg/ml is recommended. Dissolve the lyophilized protein in distilled water.

GENE INFORMATION

Gene Name [CD4 CD4 molecule \[Homo sapiens \]](#)

Official Symbol [CD4](#)

Synonyms CD4; CD4 molecule; CD4 antigen (p55) , T cell surface glycoprotein CD4; T-cell surface glycoprotein CD4; CD4 receptor; CD4 antigen (p55); T-cell surface antigen T4/Leu-3; CD4mut;

Gene ID [920](#)

mRNA Refseq [NM_000616](#)

Protein Refseq [NP_000607](#)

MIM [186940](#)

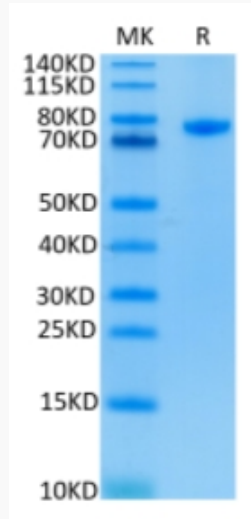
UniProt ID [P01730](#)

 Tel: 1-631-559-9269 1-516-512-3133

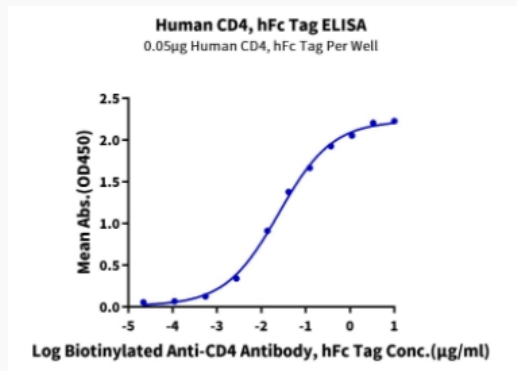
 Email: info@creative-biomart.com  Fax: 1-631-938-8127

 45-1 Ramsey Road, Shirley, NY 11967, USA

Tris-Bis PAGE



ELISA Data



 Tel: 1-631-559-9269 1-516-512-3133

 Email: info@creative-biomart.com  Fax: 1-631-938-8127

 45-1 Ramsey Road, Shirley, NY 11967, USA