

CD4 protein-coupled magnetic NanoBeads

Cat. No. CD4-5031M Lot. No. (See product label)

SPECIFICATION

Species	Human
Beads Size	500 μ
Capacity	For 5×10^8 total MNCs
Formulation	Supplied in buffer containing stabilizer
Application	Positive selection or depletion of CD4+ T cells from leukapheresis, PBMC or cell cultures. Isolated CD4+ T cells can be used for culture and expansion, flow cytometry, T cells functional assays such as cytokine production cytotoxicity, coculture experiments of CD4+ T cells with dendritic cells or B cells for evaluation of the activation of antigen-presenting cells, and translational research.
Storage	Store undiluted between 2°C and 8°C. Do not freeze.

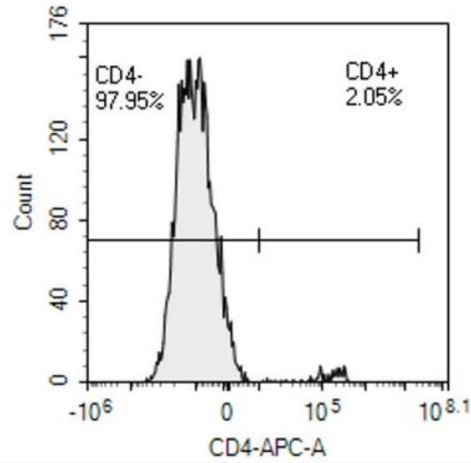
 Tel: 1-631-559-9269 1-516-512-3133

 Email: info@creative-biomart.com  Fax: 1-631-938-8127

 45-1 Ramsey Road, Shirley, NY 11967, USA


Analysis

CD4+ T cell depleted fraction



 Tel: 1-631-559-9269 1-516-512-3133

 Email: info@creative-biomart.com  Fax: 1-631-938-8127

 45-1 Ramsey Road, Shirley, NY 11967, USA