

Recombinant Human CD4 protein, His-Avi-tagged

Cat. No. CD4-5643H Lot. No. (See product label)

SPECIFICATION

Product Overview	Recombinant Human CD4 protein(P01730)(Lys26-Trp390), fused with C-terminal His and Avi tag, was expressed in HEK293.
Species	Human
Source	HEK293
ProteinLength	Lys26-Trp390
Tag	C-His-Avi
Form	Lyophilized from 0.22µm filtered solution in PBS (pH 7.4). Normally 5% trehalose is added as protectant before lyophilization.
Bio-activity	Immobilized Human CD4 at 0.5µg/ml (100µl/Well) on the plate. Dose response curve for Anti-CD4 Antibody, hFc Tag with the EC50 10.6ng/ml determined by ELISA.
Molecular Mass	The protein has a predicted MW of 43.6 kDa. Due to glycosylation, the protein migrates to 50-60 kDa based on Tris-Bis PAGE result.
Endotoxin	Less than 1EU per µg by the LAL method.
Purity	> 95% as determined by Tris-Bis PAGE; > 95% as determined by HPLC
Storage	Reconstituted protein stable at -80°C for 12 months, 4°C for 1 week. Use a manual

 Tel: 1-631-559-9269 1-516-512-3133

 Email: info@creative-biomart.com  Fax: 1-631-938-8127

 45-1 Ramsey Road, Shirley, NY 11967, USA

defrost freezer and avoid repeated freeze-thaw cycles.

Reconstitution

Centrifuge tubes before opening. Reconstituting to a concentration more than 100 µg/ml is recommended. Dissolve the lyophilized protein in distilled water.

GENE INFORMATION

Gene Name CD4 CD4 molecule [Homo sapiens]

Official Symbol CD4

Synonyms CD4; CD4 molecule; CD4 antigen (p55) , T cell surface glycoprotein CD4; T-cell surface glycoprotein CD4; CD4 receptor; CD4 antigen (p55); T-cell surface antigen T4/Leu-3; CD4mut;

Gene ID 920

mRNA Refseq NM_000616

Protein Refseq NP_000607

MIM 186940

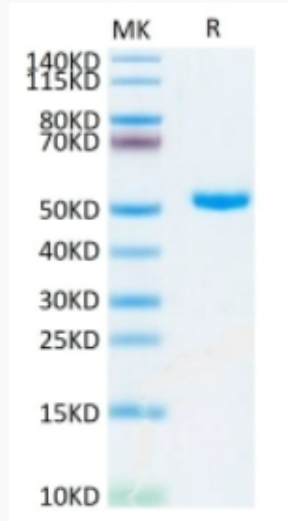
UniProt ID P01730

 Tel: 1-631-559-9269 1-516-512-3133

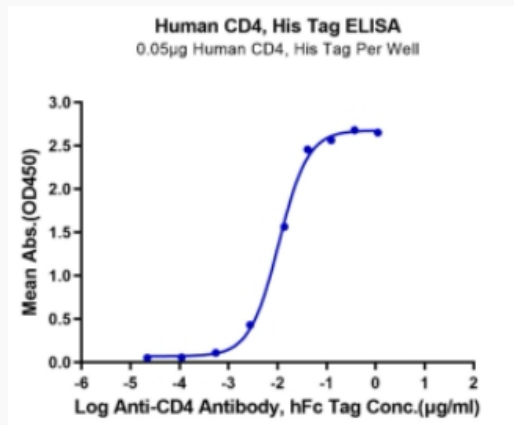
 Email: info@creative-biomart.com  Fax: 1-631-938-8127

 45-1 Ramsey Road, Shirley, NY 11967, USA

Tris-Bis PAGE



ELISA Data



 Tel: 1-631-559-9269 1-516-512-3133

 Email: info@creative-biomart.com  Fax: 1-631-938-8127

 45-1 Ramsey Road, Shirley, NY 11967, USA