

Whole Blood CD4 protein-coupled magnetic MicroBeads

Cat. No. CD4-8765M Lot. No. (See product label)

SPECIFICATION

Species Human

Capacity for 40 mL whole blood

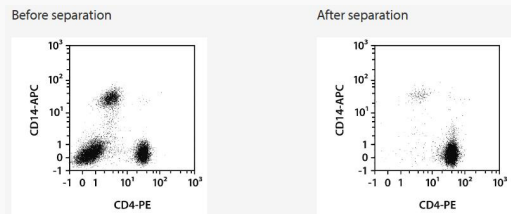
Background

StraightFrom Whole Blood CD4 MicroBeads recognize about 65% of all peripheral blood T cells. The CD4 antigen is expressed on T helper cells and at a lower level on monocytes and dendritic cells. The CD4 antigen is an accessory molecule in the recognition of MHC class II/peptide complexes by the TCR heterodimer on CD4+ T helper cells.

Application

StraightFrom Whole Blood MicroBeads allow the fast isolation of CD4+ cells directly from whole blood or bone marrow, thus minimizing hands-on time and maximizing yields of target cells. StraightFrom Whole Blood MicroBeads in combination with the autoMACS Pro Separator allow standardization of the cell separation procedure and safe handling of hazardous samples. The purified CD4+ cells are well-suited for further flow cytometric, functional, or molecular analysis including lineage-specific chimerism analysis after allogeneic stem cell transplantation.

Analysis



Tel: 1-631-559-9269 1-516-512-3133

Email: info@creative-biomart.com Fax: 1-631-938-8127

45-1 Ramsey Road, Shirley, NY 11967, USA

Separation of a whole blood sample using the StraightFrom Whole Blood CD4 MicroBeads and the MultiMACS Cell24 Separator Plus with the Single-Column Adapter and Whole Blood Columns without washing step after labeling. Cells were fluorescently stained with CD4-PE, CD14-APC, as well as CD45-VioBlue and analyzed by flow cytometry using the MACSQuant Analyzer. Cells were triggered via CD45-VioBlue, cell debris and dead cells were excluded from the analysis based on scatter signals and propidium iodide fluorescence.

 Tel: 1-631-559-9269 1-516-512-3133

 Email: info@creative-biomart.com  Fax: 1-631-938-8127

 45-1 Ramsey Road, Shirley, NY 11967, USA