

# LRSC CD4 protein-coupled magnetic MicroBeads

Cat. No. CD4-9310M Lot. No. (See product label)

## SPECIFICATION

**Species** Human

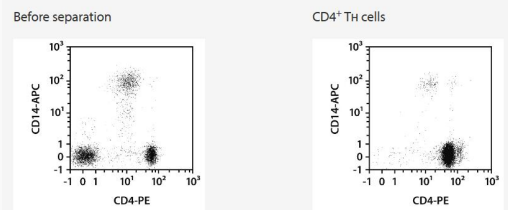
**Capacity** for 1 LRSC

**Background**

The CD4 antigen is expressed on T helper cells and at a lower level on monocytes and dendritic cells. The CD4 antigen is an accessory molecule in the recognition of MHC class II/peptide complexes by the TCR heterodimer on CD4+ T helper cells.

**Application**

The purified CD4+ T cells are well suited for further flow cytometric, functional, or molecular analysis.



**Analysis**

Separation of an LRSC sample using the StraightFrom LRSC CD4 MicroBead Kit and the MultiMACS Cell24 Separator Plus with the Single-Column Adapter and LS Columns. Cells were fluorescently stained with CD4-PE, CD14-APC, as well as CD45-VioBlue and analyzed by flow cytometry using the MACSQuant Analyzer. Cell debris and dead cells were excluded from the analysis based on scatter signals and propidium iodide fluorescence.

Tel: 1-631-559-9269 1-516-512-3133

Email: [info@creative-biomart.com](mailto:info@creative-biomart.com) Fax: 1-631-938-8127

45-1 Ramsey Road, Shirley, NY 11967, USA