

Recombinant Rhesus macaque CD40 protein, Fc-tagged

Cat. No. CD40-388R **Lot. No.** (See product label)

SPECIFICATION

Product Overview	Recombinant Rhesus macaque CD40 protein (Glu21-Arg193), fused to human IgG1 Fc tag at C-terminus, was expressed in human 293 cells (HEK293).
Species	Rhesus macaque
Source	HEK293
ProteinLength	173
Description	<p>CD40 is also known as TNFRSF5, Bp50, CDW40, MGC9013, TNFRSF5 and p50, is a member of the TNF receptor superfamily which are single transmembrane-spanning glycoproteins, and plays an essential role in mediating a broad variety of immune and inflammatory responses including T cell-dependent immunoglobulin class switching, memory B cell development, and germinal center formation. CD40 is a costimulatory protein found on antigen presenting cells and is required for their activation. The binding of CD154 (CD40L) on TH cells to CD40 activates antigen presenting cells and induces a variety of downstream effects. CD40 contains 4 cysteine-rich repeats in the extracellular domain, and is expressed in B cells, dendritic cells, macrophages, endothelial cells, and several tumor cell lines. The extracellular domain has the cysteine-rich repeat regions, which are characteristic for many of the receptors of the TNF superfamily. Interaction of CD40 with its ligand, CD40L, leads to aggregation of CD40 molecules, which in turn interact with cytoplasmic components to initiate signaling pathways. Early studies on the CD40-CD40L system revealed its role in humoral immunity. Defects in CD40 result in hyper-IgM immunodeficiency type 3</p>

 Tel: 1-631-559-9269 1-516-512-3133

 Email: info@creative-biomart.com  Fax: 1-631-938-8127

 45-1 Ramsey Road, Shirley, NY 11967, USA

(HIGM3), an autosomal recessive disorder characterized by an inability of B cells to undergo isotype switching, as well as an inability to mount an antibody-specific immune response, and a lack of germinal center formation.

Form

Lyophilized from 0.22 um filtered solution in Tris with Glycine, Arginine and NaCl, pH7.5, 10% trehalose.

Molecular Mass

The protein has a calculated MW of 45.9 kDa. The protein migrates as 56 kDa under reducing (R) condition (SDS-PAGE).

Endotoxin

Less than 1.0 EU per ug by the LAL method.

Purity

>95% as determined by SDS-PAGE.

Storage

For long term storage, the product should be stored at lyophilized state at -20 centigrade or lower.

Please avoid repeated freeze-thaw cycles.

This product is stable after storage at:

-20 centigrade to -70 centigrade for 12 months in lyophilized state;

-70 centigrade for 3 months under sterile conditions after reconstitution.

Reconstitution

It is recommended that sterile water be added to the vial to prepare a stock solution of 0.2 ug/ul. Centrifuge the vial at 4°C before opening to recover the entire contents.

GENE INFORMATION

Gene Name

CD40

Official Symbol

CD40

Synonyms

CD40; CD40 molecule, TNF receptor superfamily member 5; TNFRSF5, tumor

 Tel: 1-631-559-9269 1-516-512-3133

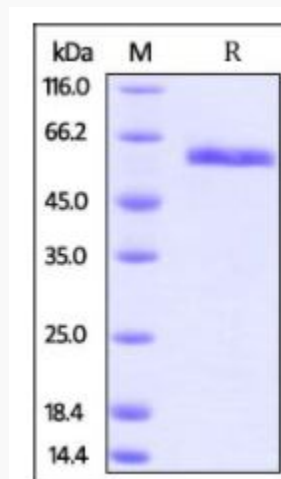
 Email: info@creative-biomart.com  Fax: 1-631-938-8127

 45-1 Ramsey Road, Shirley, NY 11967, USA

necrosis factor receptor superfamily, member 5; tumor necrosis factor receptor superfamily member 5; Bp50; p50; CD40L receptor; CD40 type II isoform; B cell-associated molecule; B cell surface antigen CD40; B-cell surface antigen CD40; CD40 antigen (TNF receptor superfamily member 5); tumor necrosis factor receptor superfamily, member 5; nerve growth factor receptor-related B-lymphocyte activation molecule; CDW40; TNFRSF5; MGC9013

Gene ID	707749
mRNA Refseq	NM_001265862.1
Protein Refseq	NP_001252791.1
UniProt ID	F6SNI1

SDS-PAGE of CD40-388R



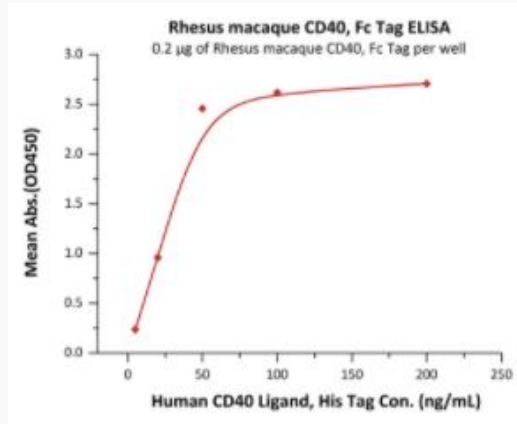
Rhesus macaque CD40, Fc Tag on SDS-PAGE under reducing (R) condition. The gel was stained overnight with Coomassie Blue. The purity of the protein is greater than 95%.

 Tel: 1-631-559-9269 1-516-512-3133

 Email: info@creative-biomart.com  Fax: 1-631-938-8127

 45-1 Ramsey Road, Shirley, NY 11967, USA

**Bioactivity-ELISA of
CD40-388R**



Immobilized Rhesus macaque CD40, Fc Tag at 2 µg/mL (100 µL/well) can bind Human CD40 Ligand, His Tag with a linear range of 5-50 ng/mL (QC tested).

 Tel: 1-631-559-9269 1-516-512-3133

 Email: info@creative-biomart.com  Fax: 1-631-938-8127

 45-1 Ramsey Road, Shirley, NY 11967, USA