

Recombinant Rhesus macaque CD40 protein, His-tagged

Cat. No. CD40-741R **Lot. No.** (See product label)

SPECIFICATION

Product Overview

Recombinant Rhesus macaque CD40 protein (Glu21-Arg193), fused to His tag at C-terminus, was expressed in human 293 cells (HEK293).

Species

Rhesus macaque

Source

HEK293

ProteinLength

173

Description

CD40 is also known as TNFRSF5, Bp50, CDW40, MGC9013, TNFRSF5 and p50, is a member of the TNF receptor superfamily which are single transmembrane-spanning glycoproteins, and plays an essential role in mediating a broad variety of immune and inflammatory responses including T cell-dependent immunoglobulin class switching, memory B cell development, and germinal center formation. CD40 is a costimulatory protein found on antigen presenting cells and is required for their activation. The binding of CD154 (CD40L) on TH cells to CD40 activates antigen presenting cells and induces a variety of downstream effects. CD40 contains 4 cysteine-rich repeats in the extracellular domain, and is expressed in B cells, dendritic cells, macrophages, endothelial cells, and several tumor cell lines. The extracellular domain has the cysteine-rich repeat regions, which are characteristic for many of the receptors of the TNF superfamily. Interaction of CD40 with its ligand, CD40L, leads to aggregation of CD40 molecules, which in turn interact with cytoplasmic components to initiate signaling pathways. Early studies on the CD40-CD40L system revealed its role in humoral immunity. Defects in CD40 result in hyper-IgM immunodeficiency type 3

 Tel: 1-631-559-9269 1-516-512-3133

 Email: info@creative-biomart.com  Fax: 1-631-938-8127

 45-1 Ramsey Road, Shirley, NY 11967, USA

(HIGM3), an autosomal recessive disorder characterized by an inability of B cells to undergo isotype switching, as well as an inability to mount an antibody-specific immune response, and a lack of germinal center formation.

Form Lyophilized from 0.22 um filtered solution in PBS, pH7.4, 10% trehalose.

Molecular Mass The protein has a calculated MW of 21.1 kDa. The protein migrates as 30-34 kDa under reducing (R) condition (SDS-PAGE).

Endotoxin Less than 1.0 EU per ug by the LAL method.

Purity >95% as determined by SDS-PAGE.

Storage For long term storage, the product should be stored at lyophilized state at -20 centigrade or lower.
Please avoid repeated freeze-thaw cycles.
This product is stable after storage at:
-20 centigrade to -70 centigrade for 12 months in lyophilized state;
-70 centigrade for 3 months under sterile conditions after reconstitution.

Reconstitution It is recommended that sterile water be added to the vial to prepare a stock solution of 0.2 ug/ul. Centrifuge the vial at 4°C before opening to recover the entire contents.

GENE INFORMATION

Gene Name CD40

Official Symbol CD40

Synonyms Bp50, CDW40, TNFRSF5, p50

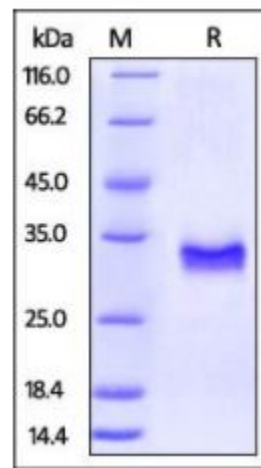
 Tel: 1-631-559-9269 1-516-512-3133

 Email: info@creative-biomart.com  Fax: 1-631-938-8127

 45-1 Ramsey Road, Shirley, NY 11967, USA

Gene ID	707749
mRNA Refseq	NM_001265862.1
Protein Refseq	NP_001252791.1
UniProt ID	F6SNI1

SDS-PAGE of CD40-741R



Rhesus macaque CD40, His Tag on SDS-PAGE under reducing (R) condition. The gel was stained overnight with Coomassie Blue. The purity of the protein is greater than 95%.

Tel: 1-631-559-9269 1-516-512-3133

Email: info@creative-biomart.com Fax: 1-631-938-8127

45-1 Ramsey Road, Shirley, NY 11967, USA