

Recombinant Human CD40LG Protein, Fc-tagged

Cat. No. CD40LG-103H Lot. No. (See product label)

SPECIFICATION

Product Overview	Recombinant Human extracellular domain(Pro134-Leu281) of Fas ligand (FASLG), transcript variant 1 (NM_000639) , with an human IgG1 Fc tag, was expressed in human cells.
Species	Human
Source	Human Cells
ProteinLength	Pro134-Leu281
Description	The protein encoded by this gene is expressed on the surface of T cells. It regulates B cell function by engaging CD40 on the B cell surface. A defect in this gene results in an inability to undergo immunoglobulin class switch and is associated with hyper-IgM syndrome.
Form	Purified protein formulated in a sterile solution of TBS buffer, pH7.270, without any preservatives.
Molecular Mass	61 kDa
Endotoxin	Endotoxin level is < 0.1 ng/g of protein (<1EU /g)
Purity	>90% by SDS-PAGE gel and Coomassie Blue staining
Applications	Antigens, Western, ELISA and other in vitro binding or in vivo functional assays, and

 Tel: 1-631-559-9269 1-516-512-3133

 Email: info@creative-biomart.com  Fax: 1-631-938-8127

 45-1 Ramsey Road, Shirley, NY 11967, USA

protein-protein interaction studies.

GENE INFORMATION

Gene Name CD40LG CD40 ligand [Homo sapiens]

Official Symbol CD40LG

Synonyms CD40LG; CD40 ligand; HIGM1, IMD3, TNFSF5, tumor necrosis factor (ligand) superfamily, member 5 (hyper IgM syndrome); CD40 antigen ligand; CD40L; CD154; gp39; hCD40L; hyper IgM syndrome; T B cell activating molecule; TNF related activation protein; TRAP; tumor necrosis factor (ligand) superfamily member 5; CD40-L; T-cell antigen Gp39; T-B cell-activating molecule; TNF-related activation protein; IGM; IMD3; HIGM1; T-BAM; TNFSF5;

Gene ID 959

mRNA Refseq NM_000074

Protein Refseq NP_000065

MIM 300386

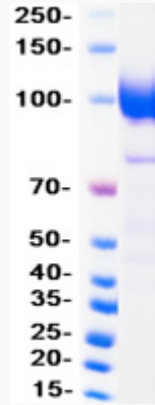
UniProt ID P29965

 Tel: 1-631-559-9269 1-516-512-3133

 Email: info@creative-biomart.com  Fax: 1-631-938-8127

 45-1 Ramsey Road, Shirley, NY 11967, USA

SDS-PAGE



 Tel: 1-631-559-9269 1-516-512-3133

 Email: info@creative-biomart.com  Fax: 1-631-938-8127

 45-1 Ramsey Road, Shirley, NY 11967, USA