

## Recombinant Human CD40LG Protein, C-His-tagged

Cat. No. CD40LG-197H Lot. No. (See product label)

### SPECIFICATION

**Product Overview** Recombinant Human CD40LG Protein with C-His tag was expressed in E. coli.

**Species** Human

**Source** E.coli

**Description**

CD40 ligand (CD40L), also known as CD154, TRAP, and gp39, is the ligand for the TNF receptor family member CD40. CD40L is expressed either as a soluble cytokine or as a homotrimeric transmembrane protein. CD40L primarily expressed on the surface of T-cells, but has also been reported in blood platelets, mast cells, basophils, NK cells, and B-cells. It plays an important role in stimulating B-cell cell proliferation and survival and promotes immunoglobulin class switching and secretion of IgE. Signals generated by CD40 vary depending on cell type and include activation of MAPK pathways as well as NF- $\kappa$ B. Mutations within the CD40L gene are associated with X-linked hyper-IgM syndrome characterized by high serum levels of IgM and decreased levels of other isotypes. The CD40L/CD40 pathway is an important area of interest in the study of cancer, vascular diseases, and inflammatory disorders.

**Molecular Mass** ~24 kDa

**AA Sequence**

HRRLDKIEDERNLHEDFVFMKTIQRCNTGERSLSLLNCEEIKSQFEGFVKDIMLNKEE  
TKKENSFEMQKGDQNPQIAAHVISEASSKTTSVLQWAEKGYTMSNNLVTLENGKQ  
LTVKRQGLYYIYAQVTFCSNREASSQAPFIASLCLKSPGRFERILLRAANTHSSAKPC  
GQQSIHLGGVFELQPGASVFNVTDPQVSHGTGFTSFGLLKL

 Tel: 1-631-559-9269 1-516-512-3133

 Email: [info@creative-biomart.com](mailto:info@creative-biomart.com)  Fax: 1-631-938-8127

 45-1 Ramsey Road, Shirley, NY 11967, USA

<b>Purity</b>	Transferred into competent cells and the supernatant was purified by NI column affinity chromatography and the purity is > 85% (by SDS-PAGE).
<b>Notes</b>	For research use only, not for use in diagnostic procedure.
<b>Storage</b>	Store at 4 centigrade short term. Aliquot and store at -20 centigrade long term. Avoid freeze-thaw cycles.
<b>Concentration</b>	≥0.5 mg/mL
<b>Storage Buffer</b>	PBS, 4M Urea, pH7.4

## GENE INFORMATION

<b>Gene Name</b>	CD40LG CD40 ligand [ Homo sapiens (human) ]
<b>Official Symbol</b>	CD40LG
<b>Synonyms</b>	CD40LG; CD40 ligand; HIGM1, IMD3, TNFSF5, tumor necrosis factor (ligand) superfamily, member 5 (hyper IgM syndrome); CD40 antigen ligand; CD40L; CD154; gp39; hCD40L; hyper IgM syndrome; T B cell activating molecule; TNF related activation protein; TRAP; tumor necrosis factor (ligand) superfamily member 5; CD40-L; T-cell antigen Gp39; T-B cell-activating molecule; TNF-related activation protein; IGM; IMD3; HIGM1; T-BAM; TNFSF5;
<b>Gene ID</b>	959
<b>mRNA Refseq</b>	NM_000074
<b>Protein Refseq</b>	NP_000065

 Tel: 1-631-559-9269 1-516-512-3133

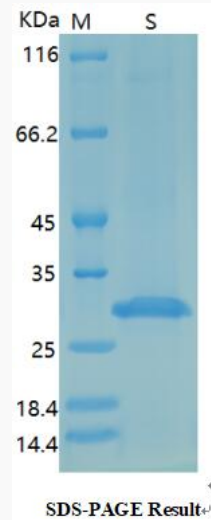
 Email: [info@creative-biomart.com](mailto:info@creative-biomart.com)  Fax: 1-631-938-8127

 45-1 Ramsey Road, Shirley, NY 11967, USA

**MIM** 300386

**UniProt ID** P29965

**SDS-PAGE**



 Tel: 1-631-559-9269 1-516-512-3133

 Email: [info@creative-biomart.com](mailto:info@creative-biomart.com)  Fax: 1-631-938-8127

 45-1 Ramsey Road, Shirley, NY 11967, USA